



Price
£595,000

Freehold

3x  1x  1x 

**The Withies,
Leatherhead, Surrey,
KT22**

cubitt&west
Helping you move forwards



Main features

- Delightful semi-detached chalet bungalow
- Chain free
- Set within a sought-after location close to Leatherhead Town
- Lovely rear garden with summer house
- Off-road parking for 2 cars

Accommodation

GROUND FLOOR

Hallway

Lounge: 13'1 x 11'3 (3.99m x 3.43m)

Kitchen: 20'3 x 17'5 (6.18m x 5.31m)

Bedroom 1: 12'3 x 10'2 (3.74m x 3.10m)

Bedroom 2: 8'9 x 8'9 (2.67m x 2.67m)

Cloakroom

FIRST FLOOR

Landing

Bedroom 3: 9'6 x 8'6 (2.90m x 2.59m)

Bathroom

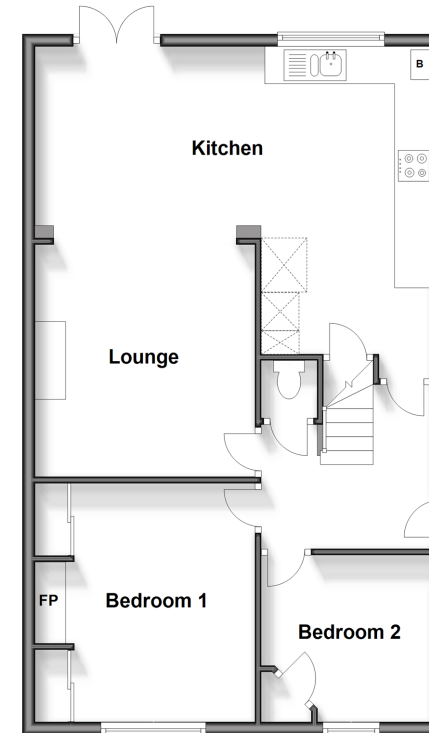
OUTSIDE

Driveway

Rear Garden

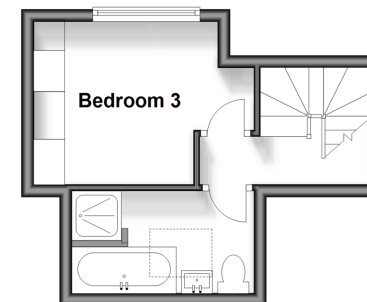
Ground Floor

Approx. 69.7 sq. metres (749.9 sq. feet)



First Floor

Approx. 17.6 sq. metres (189.2 sq. feet)



Call Leatherhead - 01372 373780 ■ CubittAndWest.Co.Uk

- Legal advice should be taken to verify fixtures/fittings, planning, alterations and/or lease details
- Appliances & services are untested, dimensions are approximate and floor plans are not to scale