



Guide Price
£800,000

Freehold

4x  2x  4x 

**Dorking Road,
Bookham, Leatherhead,
Surrey, KT23**

OVER 60?

Secure this property
for up to **59% less!**

cubitt&west
Helping you move forwards



Main features

- Detached chalet bungalow set on a corner plot
- Beautiful front and rear gardens
- Off-road parking
- Wonderful location walking distance to Bookham High Street
- Flexible living accommodation

Accommodation

GROUND FLOOR

Entrance Hall

Living Room: 20'7 x 8'9 (6.28m x 2.67m)

Dining Area: 10'1 x 9'6 (3.08m x 2.90m)

Kitchen: 9'8 x 8'5 (2.95m x 2.57m)

Family Area: 14'1 x 9'1 (4.30m x 2.77m)

Lounge: 19'8 x 14'1 (6.00m x 4.30m)

Utility Area: 8'8 x 7'7 (2.64m x 2.31m)

Bedroom 3: 13'1 x 8'8 (3.99m x 2.64m)

Bedroom 4: 13'8 x 9'5 (4.17m x 2.87m)

Bathroom

FIRST FLOOR

Landing

Bedroom 1: 18'1 x 11'3 (5.52m x 3.43m)

Bedroom 2: 14'0 x 13'1 (4.27m x 3.99m)

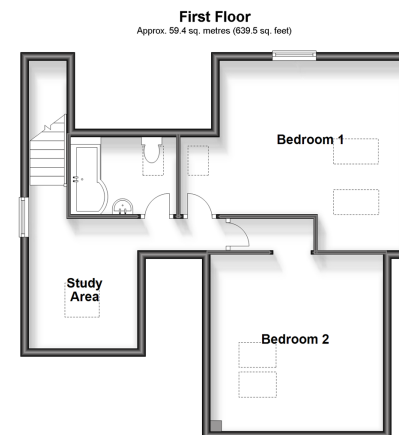
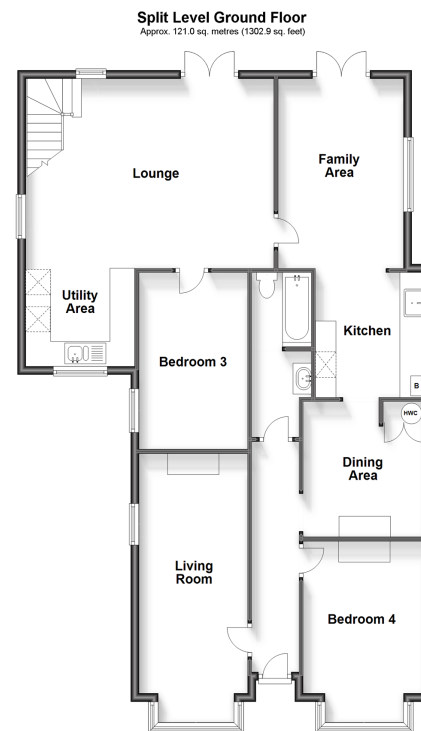
Study Area: 8'3 x 7'1 (2.52m x 2.16m)

Bathroom 2

OUTSIDE

Front & Rear Gardens

Off-Road Parking



Call Leatherhead - 01372 373780 ■ CubittAndWest.Co.Uk

- Legal advice should be taken to verify fixtures/fittings, planning, alterations and/or lease details
- Appliances & services are untested, dimensions are approximate and floor plans are not to scale
- Through a Homewise Home For Life Plan people aged 60+ can secure this property for up to 59% less, by purchasing a Lifetime Lease.



21107460/20230715/MB1/DC