

OVER 60?

You could get up to
59% off the price!*

Guide Price

£270,000

Leasehold

1x  1x  1x 

**Sheridan House,
Highbury Drive,
Leatherhead, Surrey,
KT22**

cubitt&west
Helping you move forwards



Main features

- A fantastic apartment with amazing panoramic views of the Surrey Hills!
- Open plan kitchen to lounge/dining area and wrap around balcony
- Allocated parking
- Telephone entry system and lift access
- Central location and a commuter's dream

Accommodation

THIRD FLOOR

Hallway

Lounge/Dining Area: 19'0 x 10'0 (5.80m x 3.05m)

Balcony

Kitchen: 9'9 x 8'6 (2.97m x 2.59m)

Bedroom : 15'6 x 8'10 (4.73m x 2.69m)

Bathroom

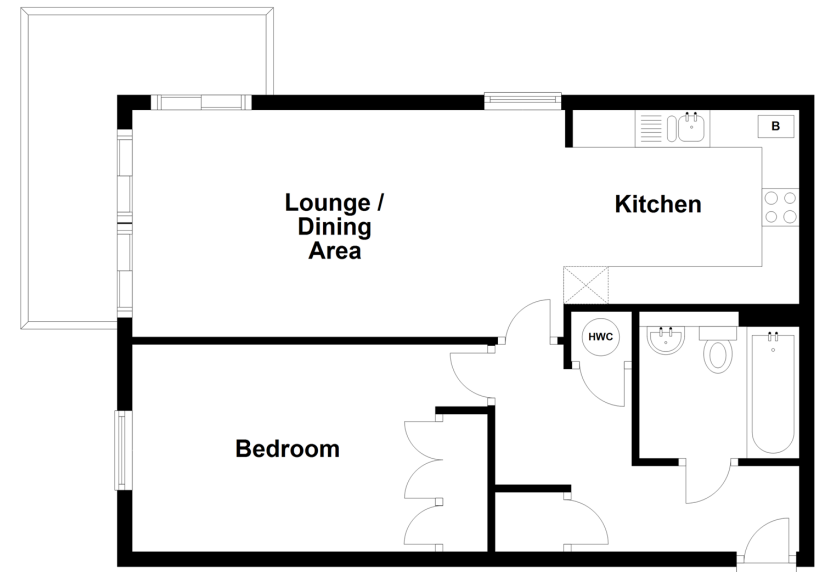
OUTSIDE

Allocated Parking

Communal Garden

Third Floor

Approx. 52.7 sq. metres (567.2 sq. feet)



Call Leatherhead - 01372 373780 ■ CubittAndWest.Co.Uk

- Legal advice should be taken to verify fixtures/fittings, planning, alterations and/or lease details
- Appliances & services are untested, dimensions are approximate and floor plans are not to scale
- Our Homewise partnership offer a 'Home for Life' plan to buyers over 60, granting a lifetime lease for your protection and reducing the purchase price by up to 59%



21107637/20221101/JA/AM