



Price
£750,000

Freehold

4x  2x  2x 

**Humphrey Close,
Fetcham, Leatherhead,
Surrey, KT22**

OVER 60?

Secure this property
for up to **59% less!**

cubitt&west
Helping you move forwards



Main features

- Stunning semi-detached home set within a lovely cul-de-sac
- Off-road parking
- Beautiful 100 foot rear garden
- Primary bedroom benefiting an en-suite shower room
- Double integral garage

Accommodation

GROUND FLOOR

Hallway

Lounge: 13'2 x 13'1 (4.02m x 3.99m)

Dining Area: 16'9 x 10'2 (5.11m x 3.10m)

Kitchen: 16'2 x 12'8 (4.93m x 3.86m)

Cloakroom

FIRST FLOOR

Landing

Bedroom 1: 12'8 x 10'4 (3.86m x 3.15m)

En-Suite Shower Room

Bedroom 2: 12'8 x 10'1 (3.86m x 3.08m)

Bedroom 3: 11'10 x 10'9 (3.61m x 3.28m)

Bedroom 4: 10'7 x 9'9 (3.23m x 2.97m)

Bathroom

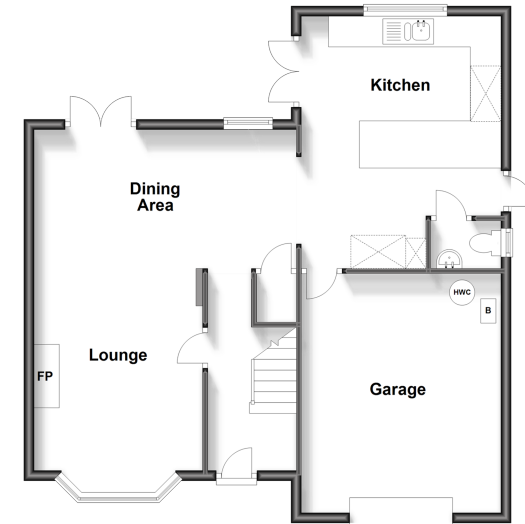
OUTSIDE

Garage

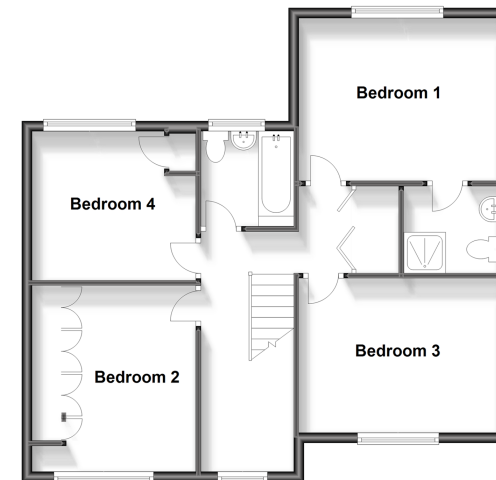
Off-Road Parking

Front & Rear Gardens

Ground Floor
Approx. 73.9 sq. metres (795.6 sq. feet)



First Floor
Approx. 67.5 sq. metres (727.0 sq. feet)



Call Leatherhead - 01372 373780 ■ CubittAndWest.Co.Uk

- Legal advice should be taken to verify fixtures/fittings, planning, alterations and/or lease details
- Appliances & services are untested, dimensions are approximate and floor plans are not to scale
- Through a Homewise Home For Life Plan people aged 60+ can secure this property for up to 59% less, by purchasing a Lifetime Lease.



21107784/20230814/JB/DC