



Guide Price
£500,000

Freehold

4x  1x  2x 

**Lodge Road, Fetcham,
Leatherhead, Surrey,
KT22**

OVER 60?

Secure this property
for up to **59% less!**

cubitt&west
Helping you move forwards



Main features

- Semi-detached family home
- Large conservatory overlooking beautiful garden
- Off-road parking
- Private road
- Sought-after location close to local amenities

Accommodation

GROUND FLOOR

Lounge/Diner: 26'2 maximum x 14'2 (7.98m x 4.32m)

Kitchen: 11'2 x 9'9 (3.41m x 2.97m)

Conservatory: 16'0 x 12'9 (4.88m x 3.89m)

FIRST FLOOR

Landing

Bedroom 1: 12'9 x 11'6 (3.89m x 3.51m)

Bedroom 2: 13'1 x 11'3 (3.99m x 3.43m)

Bedroom 3: 6'7 x 6'6 (2.01m x 1.98m)

Bathroom

SECOND FLOOR

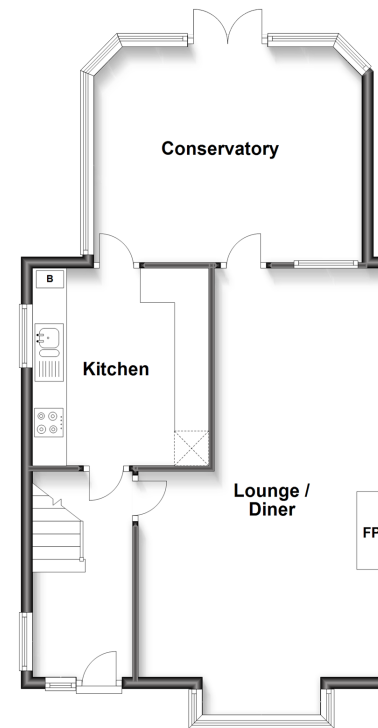
Bedroom 4: 16'2 x 12'3 (4.93m x 3.74m)

OUTSIDE

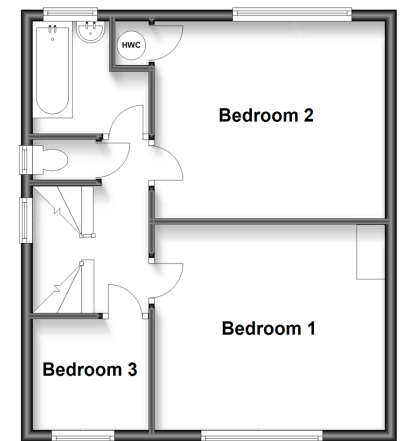
Front & Rear Gardens

Off-Road Parking

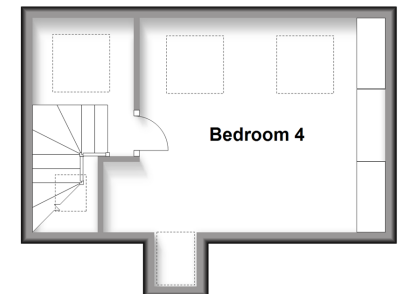
Ground Floor
Approx. 63.1 sq. metres (678.9 sq. feet)



First Floor
Approx. 43.9 sq. metres (472.4 sq. feet)



Second Floor
Approx. 23.7 sq. metres (254.8 sq. feet)



Call Leatherhead - 01372 373780 ■ CubittAndWest.Co.Uk

- Legal advice should be taken to verify fixtures/fittings, planning, alterations and/or lease details
- Appliances & services are untested, dimensions are approximate and floor plans are not to scale
- Through a Homewise Home For Life Plan people aged 60+ can secure this property for up to 59% less, by purchasing a Lifetime Lease.



21107816/20240420/MB1/DC