



Price

£1,000,000

Freehold

5x  3x  2x 

**Hale Pit Road, Bookham,
Leatherhead, Surrey,
KT23**

OVER 60?

Secure this property
for up to **59% less!**



Video Tour available

cubitt&west
Helping you move forwards



Main features

- Attractive detached home offering flexible accommodation
- Fantastic open plan living on the ground floor with bi-fold doors to rear garden
- En-suite to main bedroom
- Large garden with modern decking area
- Lovely views from rear garden

Accommodation

GROUND FLOOR

Lounge: 20'9 x 18'2 (6.33m x 5.54m)
 Kitchen: 18'8 x 16'10 (5.69m x 5.13m)
 Family Room: 19'10 x 15'5 (6.05m x 4.70m)
 Bedroom 3: 17'9 x 13'8 (5.41m x 4.17m)
 Study/Bedroom 5: 17'3 x 10'1 (5.26m x 3.08m)
 Bedroom 2: 16'3 x 12'11 (4.96m x 3.94m)
 En-Suite Shower Room
 Utility Room: 13'12 x 7'11 (4.27m x 2.41m)
 Cloakroom
 Family Bathroom

FIRST FLOOR

Landing
 Bedroom 1: 19'7 maximum x 18'4 (5.97m x 5.59m)
 En-Suite Shower Room
 Dressing Area: 18'4 x 8'1 (5.59m x 2.47m)
 Walk-In Wardrobe/Bedroom 4: 19'4 x 16'8 (5.90m x 5.08m)

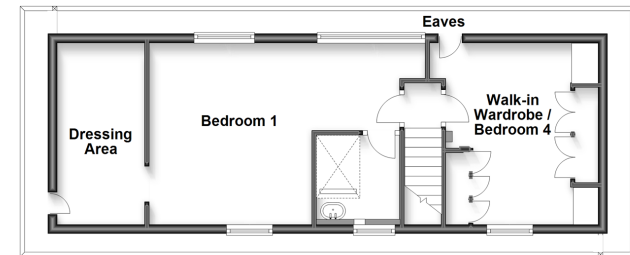
OUTSIDE

Front & Rear Gardens
 Garage

Ground Floor
 Approx. 146.2 sq. metres (1573.7 sq. feet)



First Floor
 Approx. 45.9 sq. metres (494.0 sq. feet)



Call Leatherhead - 01372 373780 ■ CubittAndWest.Co.Uk

- Legal advice should be taken to verify fixtures/fittings, planning, alterations and/or lease details
- Appliances & services are untested, dimensions are approximate and floor plans are not to scale
- Through a Homewise Home For Life Plan people aged 60+ can secure this property for up to 59% less, by purchasing a Lifetime Lease.



21107853/20230325/MB1/DC