



**OVER 60?**

Secure this property  
for up to **59% less!**

**Price**

**£835,000**

**Freehold**

4x  2x  2x 

**Hatherwood,  
Leatherhead, Surrey,  
KT22**

**cubitt&west**  
Helping you move forwards





## Main features

- Detached house
- Integral garage with off-road parking
- Private rear garden
- En-suite shower room to the primary bedroom
- Sought-after location close to local amenities and schools

## Accommodation

### GROUND FLOOR

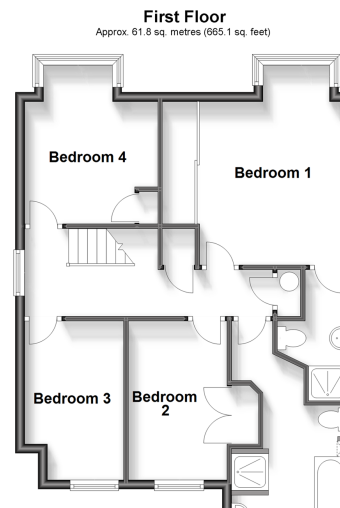
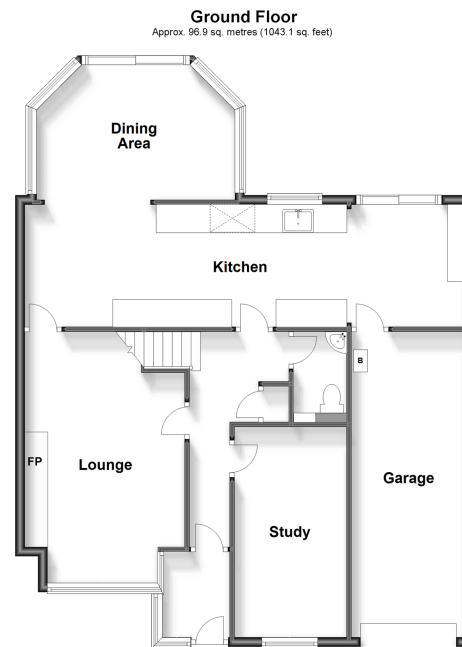
Lounge: 17'8 x 11'1 (5.39m x 3.38m)  
 Study: 15'8 x 7'6 (4.78m x 2.29m)  
 Kitchen: 30'1 x 7'1 (9.18m x 2.16m)  
 Dining Area: 15'1 x 10'3 (4.60m x 3.13m)

### FIRST FLOOR

Landing  
 Bedroom 1: 14'6 x 10'8 (4.42m x 3.25m)  
 En-Suite Shower Room  
 Bedroom 2: 11'1 x 6'6 (3.38m x 1.98m)  
 Bedroom 3: 11'5 x 7'0 (3.48m x 2.14m)  
 Bedroom 4: 9'5 x 8'3 (2.87m x 2.52m)  
 Bathroom

### OUTSIDE

Front & Rear Gardens  
 Off-Road Parking  
 Garage



**Call Leatherhead - 01372 373780 ■ CubittAndWest.Co.Uk**

- Legal advice should be taken to verify fixtures/fittings, planning, alterations and/or lease details
- Appliances & services are untested, dimensions are approximate and floor plans are not to scale
- Through a Homewise Home For Life Plan people aged 60+ can secure this property for up to 59% less, by purchasing a Lifetime Lease.



21107890/20240425/MB1/LB