



Price

£250,000

Leasehold

2x  1x  1x 

**Holly Court, Belmont
Road, Leatherhead,
Surrey, KT22**

cubitt&west
Helping you move forwards



Main features

- Retirement flat with 24hr care line alarm
- Exclusive to the over 55 age group
- First floor apartment set in a picturesque location
- Chain free
- Guest suite for overnight visitor stays

Accommodation

FIRST FLOOR

Hallway

Lounge/Diner: 20'1 x 13'8 (6.13m x 4.17m)

Kitchen: 8'4 x 6'6 (2.54m x 1.98m)

Bedroom 1: 13'3 x 12'3 (4.04m x 3.74m)

En-Suite Shower Room

Bedroom 2: 11'8 x 10'1 (3.56m x 3.08m)

Bathroom

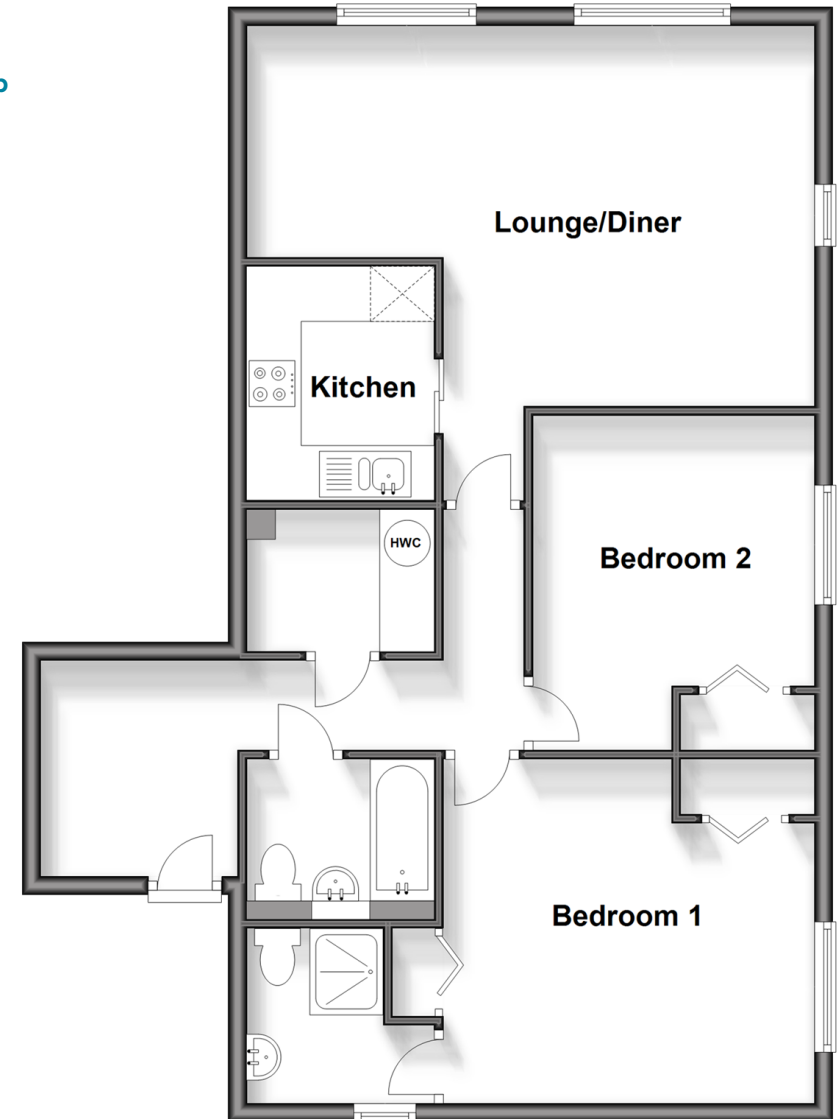
OUTSIDE

Communal Gardens

Off-Road Parking

First Floor

Approx. 78.1 sq. metres (840.6 sq. feet)



Call Leatherhead - 01372 373780 ■ CubittAndWest.Co.Uk

- Legal advice should be taken to verify fixtures/fittings, planning, alterations and/or lease details
- Appliances & services are untested, dimensions are approximate and floor plans are not to scale