



**Guide Price**  
**£495,000**

**Freehold**

3x  1x  1x 

**Ronelean Road,  
Surbiton, Surrey, KT6**

**OVER 60?**

Secure this property  
for up to **59% less!**

**cubitt&west**  
Helping you move forwards





## Main features

- End of terrace home set within a lovely location
- Off-road parking for two cars
- Beautifully sunny rear garden
- Set within close proximity to the local schools
- Downstairs toilet

## Accommodation

### GROUND FLOOR

Hallway

Lounge: 12'1 x 9'3 (3.69m x 2.82m)

Kitchen/Dining Room: 15'8 x 10'3 (4.78m x 3.13m)

Lean-To: 9'2 x 8'4 (2.80m x 2.54m)

Separate Toilet

### FIRST FLOOR

Landing

Bedroom 1: 11'0 x 7'7 (3.36m x 2.31m)

Bedroom 2: 11'4 x 7'8 (3.46m x 2.34m)

Bedroom 3: 8'8 x 6'0 (2.64m x 1.83m)

Shower Room

### OUTSIDE

Front & Rear Gardens

Off-Road Parking

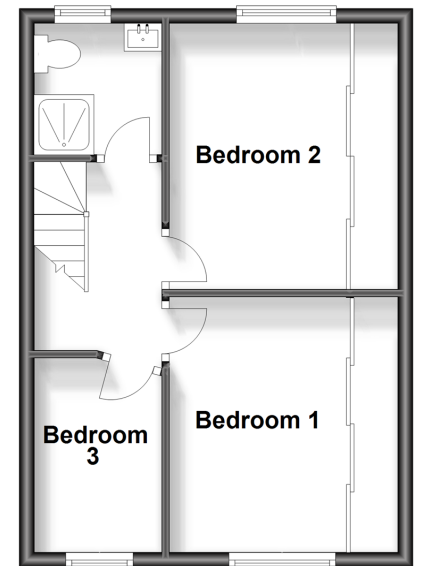
### Ground Floor

Approx. 41.3 sq. metres (444.1 sq. feet)



### First Floor

Approx. 33.9 sq. metres (365.1 sq. feet)



**Call Leatherhead - 01372 373780 ■ CubittAndWest.Co.Uk**

- Legal advice should be taken to verify fixtures/fittings, planning, alterations and/or lease details
- Appliances & services are untested, dimensions are approximate and floor plans are not to scale
- Through a Homewise Home For Life Plan people aged 60+ can secure this property for up to 59% less, by purchasing a Lifetime Lease.



21107953/20230920/DC/DC