



Price

£640,000

Freehold

2x  1x  2x 

**Grapevine Cottage,
Little Bookham Street,
Bookham, Leatherhead,
Surrey, KT23**

OVER 60?

Secure this property
for up to **59% less!**

cubitt&west
Helping you move forwards



Main features

- 16th Century Grade 2 listed farmhouse
- Short walk from The Common and Bookham station
- Off road parking for several cars
- Full renovation throughout in accordance with a Grade 2 listing
- Offered chain free

Accommodation

GROUND FLOOR

Kitchen: 19'4 x 7'8 (5.90m x 2.34m)

Dining Room: 13'5 x 12'1 (4.09m x 3.69m)

Lounge: 13'3 x 13'3 (4.04m x 4.04m)

Cloakroom

FIRST FLOOR

Landing

Bedroom 1: 13'9 x 10'1 (4.19m x 3.08m)

Bedroom 2: 13'9 x 10'1 (4.19m x 3.08m)

Bathroom

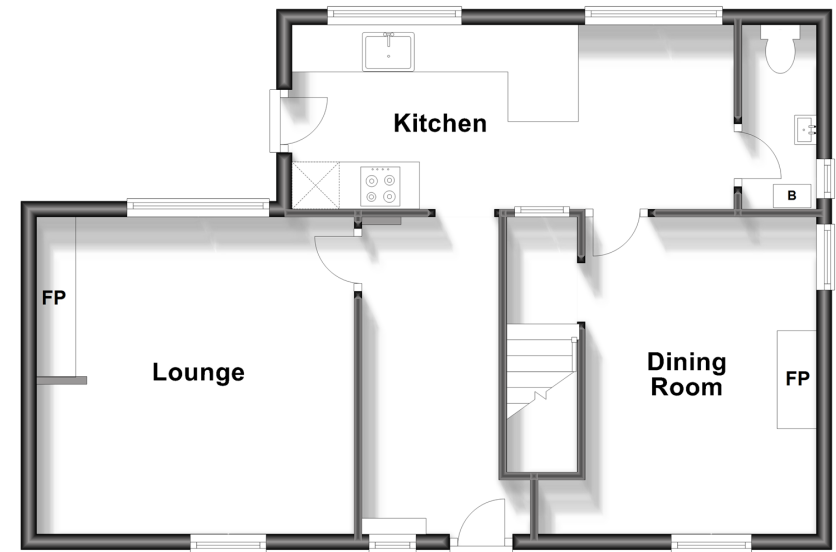
OUTSIDE

Front & Rear Gardens

Off-Road Parking

Ground Floor

Approx. 56.7 sq. metres (610.2 sq. feet)



First Floor

Approx. 40.3 sq. metres (433.8 sq. feet)



Call Leatherhead - 01372 373780 ■ CubittAndWest.Co.Uk

- Legal advice should be taken to verify fixtures/fittings, planning, alterations and/or lease details
- Appliances & services are untested, dimensions are approximate and floor plans are not to scale
- Through a Homewise Home For Life Plan people aged 60+ can secure this property for up to 59% less, by purchasing a Lifetime Lease.



21108013/20231218/YK/DC