



Price

£230,000

Leasehold

1x  1x  1x 

**Waterfields,
Leatherhead, Surrey,
KT22**

OVER 60?

Secure this property
for up to **59% less!**

cubitt & west
Helping you move forwards



Main features

- Ground floor maisonette
- Garage en-bloc
- Sought-after location near to the train station and local amenities
- Modern throughout and tastefully decorated
- Long Lease

Accommodation

GROUND FLOOR

Hallway

Lounge: 18'8 x 8'5 (5.69m x 2.57m)

Kitchen: 9'1 x 7'8 (2.77m x 2.34m)

Bedroom: 14'6 x 8'5 (4.42m x 2.57m)

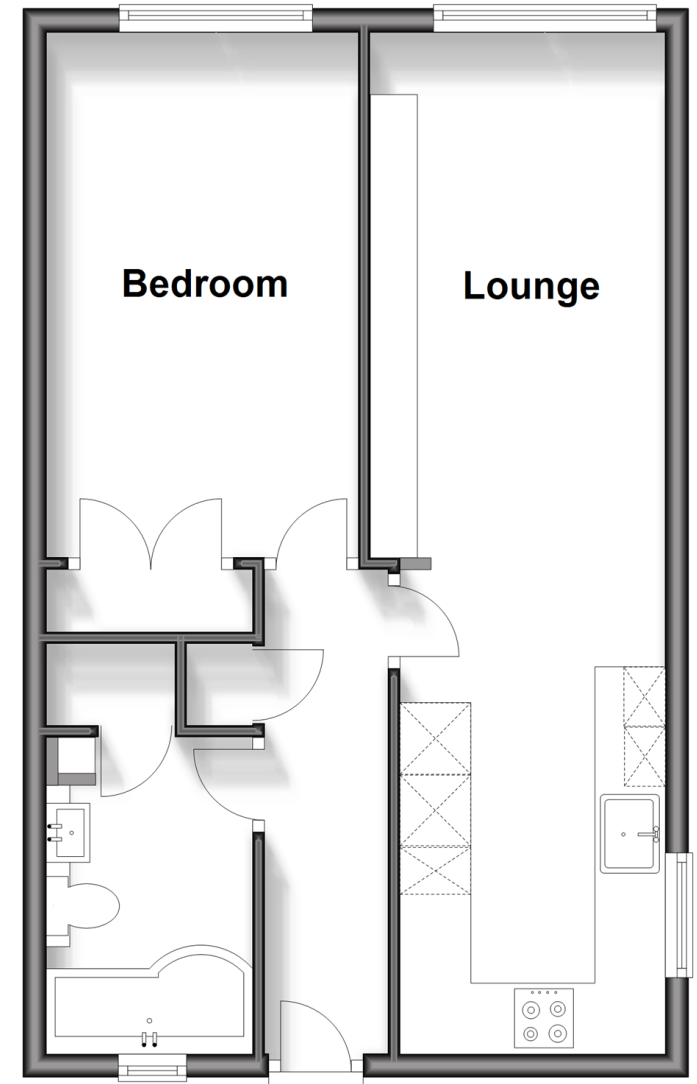
Bathroom

OUTSIDE

Garage

Ground Floor

Approx. 45.2 sq. metres (486.4 sq. feet)



Call Leatherhead - 01372 373780 ■ CubittAndWest.Co.Uk

- Legal advice should be taken to verify fixtures/fittings, planning, alterations and/or lease details
- Appliances & services are untested, dimensions are approximate and floor plans are not to scale
- Through a Homewise Home For Life Plan people aged 60+ can secure this property for up to 59% less, by purchasing a Lifetime Lease.



21108029/20240203/DC/DC