



Price
£500,000

Freehold

2x  1x  1x 

**Oswald Road, Fetcham,
Leatherhead, Surrey,
KT22**

OVER 60?

Secure this property
for up to **59% less!**

cubitt&west
Helping you move forwards



Main features

- Quiet residential location close to shops & local amenities
- Easy access to London via Leatherhead station which is 1.2 miles away
- Tastefully renovated throughout
- Potential to extend subject to necessary consents
- Walking distance to local schools

Accommodation

GROUND FLOOR

Lounge: 15'4 x 13'11 (4.68m x 4.24m)

Kitchen/Diner: 13'11 x 10'0 (4.24m x 3.05m)

FIRST FLOOR

Landing

Bedroom 1: 13'4 x 11'1 (4.07m x 3.38m)

Bedroom 2: 12'1 x 8'1 (3.69m x 2.47m)

Bathroom

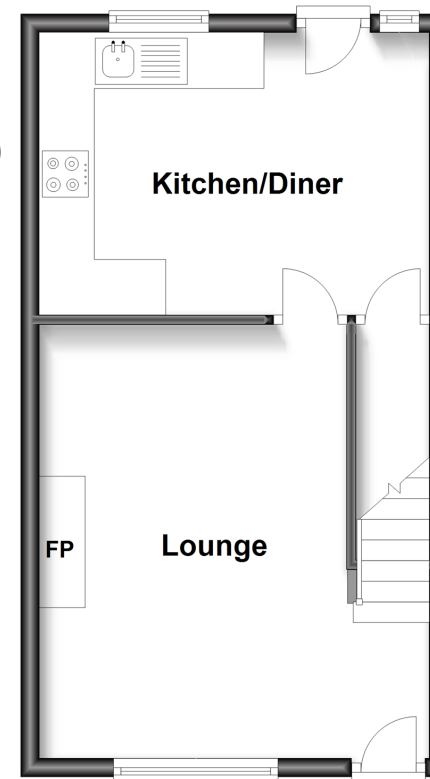
OUTSIDE

Driveway

Rear Garden

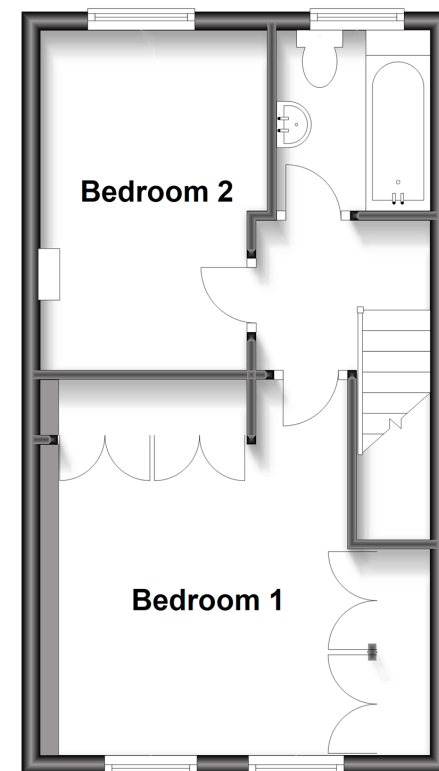
Ground Floor

Approx. 33.2 sq. metres (357.5 sq. feet)



First Floor

Approx. 33.2 sq. metres (357.5 sq. feet)



Call Leatherhead - 01372 373780 ■ CubittAndWest.Co.Uk

- Legal advice should be taken to verify fixtures/fittings, planning, alterations and/or lease details
- Appliances & services are untested, dimensions are approximate and floor plans are not to scale
- Through a Homewise Home For Life Plan people aged 60+ can secure this property for up to 59% less, by purchasing a Lifetime Lease.



21108052/20240224/MB1/YK