



**Price**  
**£325,000**

**Leasehold**

2x  1x  1x 

**Prime House, Challenge  
Court, Leatherhead,  
Surrey, KT22**

**OVER 60?**

Secure this property  
for up to **59% less!**

**cubitt&west**  
Helping you move forwards





## Main features

- Gated development
- Allocated parking space
- Outstanding new build warranty provided by Global Home Warranties Ltd
- Modern decor and open plan living space
- Well connected via easy access to M25 and Leatherhead train station

## Accommodation

### SECOND FLOOR

Hallway

Lounge/Kitchen/Diner: 13'4 x 10'5  
(4.07m x 3.18m)

Bedroom 1: 11'1 x 9'4 (3.38m x 2.85m)

Bedroom 2: 7'1 x 6'1 (2.16m x 1.86m)

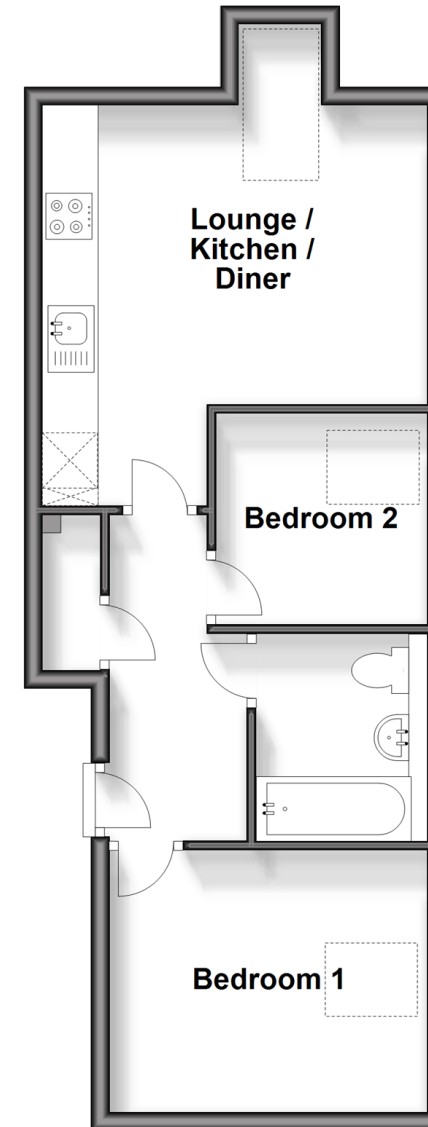
Bathroom

### OUTSIDE

Allocated Parking

## Second Floor

Approx. 43.0 sq. metres (463.0 sq. feet)



**Call Leatherhead - 01372 373780 ■ CubittAndWest.Co.Uk**

- Legal advice should be taken to verify fixtures/fittings, planning, alterations and/or lease details
- Appliances & services are untested, dimensions are approximate and floor plans are not to scale
- Through a Homewise Home For Life Plan people aged 60+ can secure this property for up to 59% less, by purchasing a Lifetime Lease.



21108075/20240409/MB1/LB