



Price
£163,750

Leasehold

3x  1x  1x 

**Realmwood Close,
Canterbury, Kent, CT1**

cubitt&west
Helping you move forwards



Main features

- 3 bedroom house
- Seperate kitchen
- Living area with doors leading to the garden
- Close to city centre

Accommodation

GROUND FLOOR

Entrance

Kitchen: 13'2 x 9'8 (4.02m x 2.95m)

Living / Dining Room: 16'4 x 14'3 (4.98m x 4.35m)

WC: 6'1 x 4'9 (1.86m x 1.45m)

FIRST FLOOR

Landing

Bedroom 1: 13'9 x 9'3 (4.19m x 2.82m)

Bedroom 2: 13'8 x 8'8 (4.17m x 2.64m)

Bedroom 3: 9'9 x 7'6 (2.97m x 2.29m)

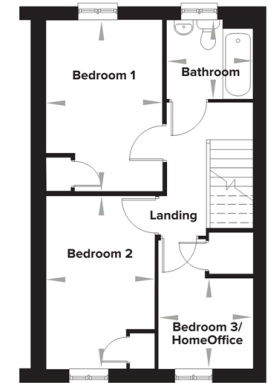
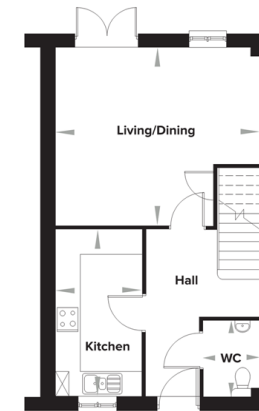
Bathroom: 10'7 x 7'3 (3.23m x 2.21m)

OUTSIDE

Allocated Parking

Rear Garden

Littlebourne Road, Canterbury House Type HA1



Ground Floor

Living/Dining	5000mm x 4345mm	16'4" x 14'3"
Kitchen	4030mm x 2140mm	13'2" x 9'8"
WC	1860mm x 1460mm	6'1" x 4'9"

First Floor

Bedroom 1	4200mm x 2835mm	13'9" x 9'3"
Bedroom 2	4175mm x 2645mm	13'8" x 8'8"
Bedroom 3	2305mm x 2217mm	7'6" x 9'9"
Bathroom	2115mm x 1942mm	10'7" x 7'3"

Call Shared Ownership - 01403 602681 ■ cubittandwest.co.uk

- Legal advice should be taken to verify fixtures/fittings, planning, alterations and/or lease details
- Appliances & services are untested, dimensions are approximate and floor plans are not to scale



10347835/20220813/RW/RW