



Guide Price
£425,000

Freehold

2x  1x  1x 

**Beechen Lane, Lower
Kingswood, Tadworth,
Surrey, KT20**

cubitt&west
Helping you move forwards



Main features

- Beautifully presented mid-terraced home with stunning views
- Garage and parking to the rear
- Great size rooms with a kitchen large enough to entertain.
- Landscaped tiered front garden and low maintenance rear garden.
- Great location for schools, green open spaces and M25

Accommodation

GROUND FLOOR

Lounge: 15'6 x 11'0 (4.73m x 3.36m)

Kitchen: 15'6 x 7'9 (4.73m x 2.36m)

FIRST FLOOR

Landing

Bedroom 1: 15'7 x 8'9 (4.75m x 2.67m)

Bedroom 2: 11'11 x 7'9 (3.63m x 2.36m)

Bathroom

OUTSIDE

Garage to Rear

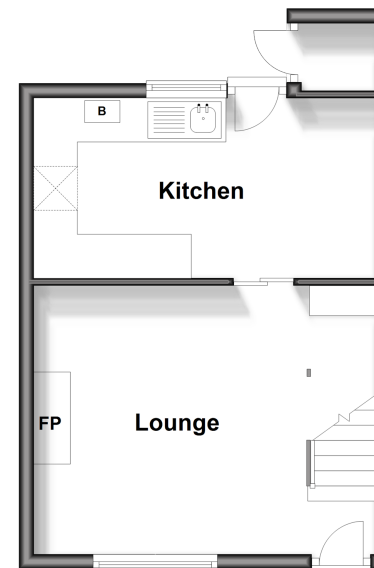
Off Street Parking to Rear

Front Garden

Rear Garden

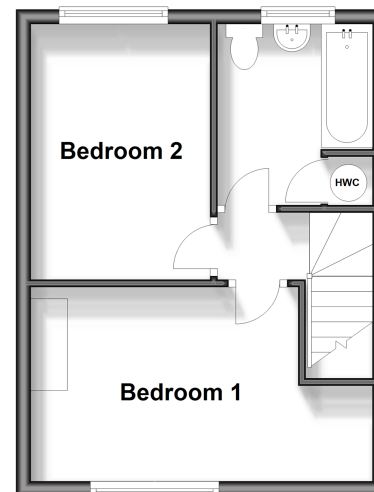
Ground Floor

Approx. 30.0 sq. metres (323.1 sq. feet)



First Floor

Approx. 29.0 sq. metres (311.7 sq. feet)



Call Banstead - 01737 352233 ■ cubittandwest.co.uk

- Legal advice should be taken to verify fixtures/fittings, planning, alterations and/or lease details
- Appliances & services are untested, dimensions are approximate and floor plans are not to scale

