



Price
£650,000

Freehold

4x  2x  2x 

**Chipstead Way,
Banstead, Surrey, SM7**

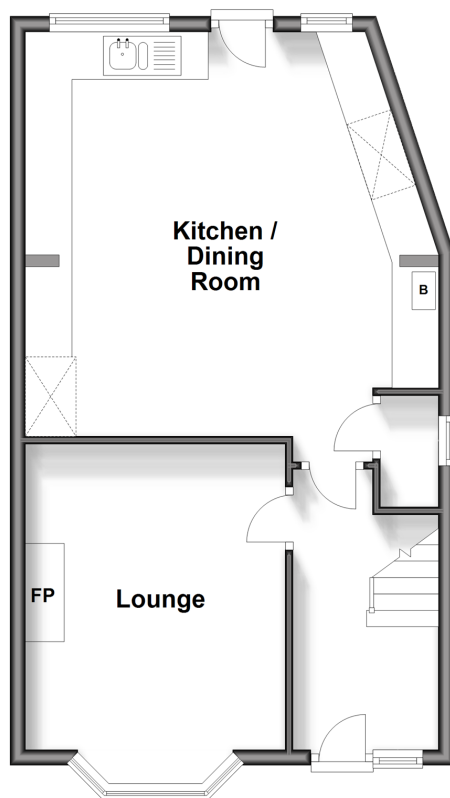
OVER 60?

Secure this property
for up to **59% less!**

cubitt&west
Helping you move forwards

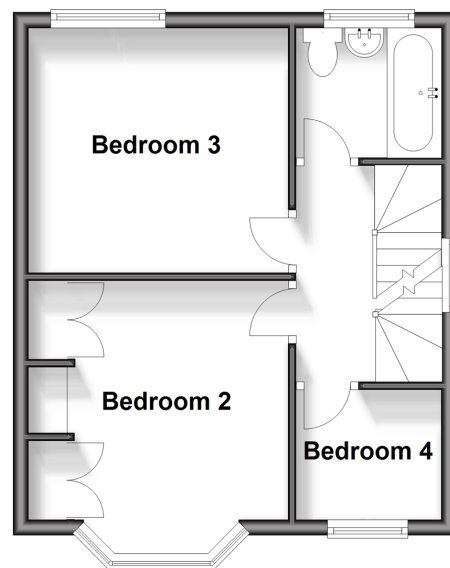
Ground Floor

Approx. 47.5 sq. metres (511.7 sq. feet)



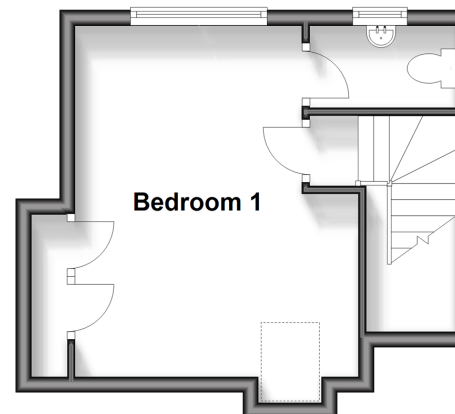
First Floor

Approx. 33.7 sq. metres (363.3 sq. feet)



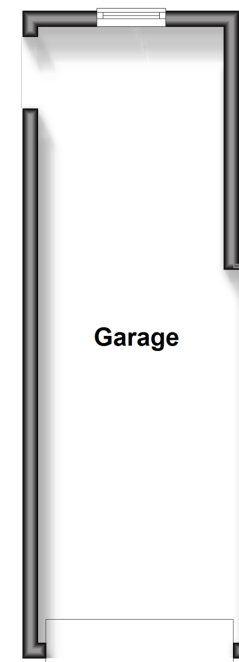
Second Floor

Approx. 22.6 sq. metres (243.2 sq. feet)



Outbuilding

Approx. 19.8 sq. metres (212.8 sq. feet)



Accommodation

GROUND FLOOR

Hallway

Kitchen/Dining Room: 17'6 x 16'9
(5.34m x 5.11m)

Lounge: 14'3 x 9'7 (4.35m x 2.92m)

FIRST FLOOR

Landing

Bedroom 2: 10'9 x 10'8 (3.28m x 3.25m)

Bedroom 3: 11'8 x 9'7 (3.56m x 2.92m)

Bedroom 4: 6'1 x 5'0 (1.86m x 1.53m)

Bathroom

SECOND FLOOR

Bedroom 1: 12'0 x 11'8 (3.66m x 3.56m)

En-Suite

OUTSIDE

Front Garden

Rear Garden

Garage



Main features

- Spacious and bright fitted kitchen with generous number of cupboards
- Ample storage solutions with built in wardrobes in two bedrooms
- Generous sunny garden
- Side access to garage with lots of potential STPP
- Located in walking distance to Chipstead and Woodmansterne Train Station



Nearest Schools

Primary Schools: Woodmansterne Primary 0.6 miles, Chipstead Valley Primary 0.8 miles
Secondary Schools: Surrey Hills School 1.9 miles, The Harris Academy 1.9 miles, The John Fisher School 2.3 miles



Transport Information

Train Stations: Woodmansterne 0.7 miles, Chipstead 0.7 miles, Smitham 1.4 miles



Address

Chipstead Way, Banstead, Surrey, SM7



Directions

For directions to this property please contact us.



cubitt&west
Helping you move forwards

Call Banstead Branch 01737 352233 ■ [cubittandwest.co.uk](https://www.cubittandwest.co.uk)



■ Legal advice should be taken to verify fixtures/fittings, planning, alterations and/or lease details ■ Appliances & services are untested, dimensions are approximate and floor plans are not to scale
■ Through a Homewise Home For Life Plan people aged 60+ can secure this property for up to 59% less, by purchasing a Lifetime Lease.



20103454/20240418/SA/SB