



**Price**  
**£250,000**

**Leasehold**

2x  1x  1x 

**Maybury Close,  
Tadworth, Surrey, KT20**

**OVER 60?**

Secure this property  
for up to **59% less!**



Video Tour available

**cubitt&west**  
Helping you move forwards





## Main features

- 2 double bedroom second floor flat
- Spacious throughout with ample storage
- Garage and parking
- Easy Access to the M25
- Perfect first time purchase or investment
- Chain Free

## Accommodation

### GROUND FLOOR

Communal Entrance Hall

### SECOND FLOOR

Entrance Hall

Kitchen: 11'5 x 7'3 (3.48m x 2.21m)

Lounge: 14'8 x 13'1 (4.47m x 3.99m)

Bedroom 1: 13'6 x 9'9 (4.12m x 2.97m)

Bedroom 2: 13'7 x 6'4 (4.14m x 1.93m)

Bathroom

### OUTSIDE

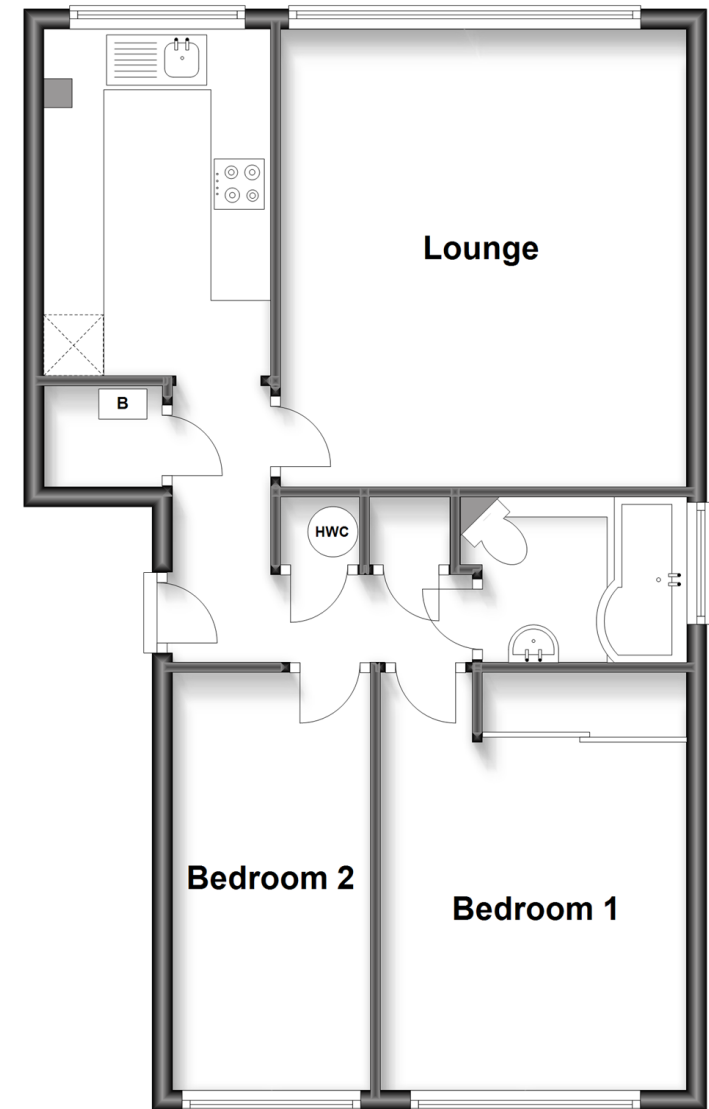
Garage en-bloc

Residents Parking

Communal Gardens

## Second Floor

Approx. 60.0 sq. metres (646.0 sq. feet)



**Call Banstead - 01737 352233 ■ [cubittandwest.co.uk](http://cubittandwest.co.uk)**

- Legal advice should be taken to verify fixtures/fittings, planning, alterations and/or lease details
- Appliances & services are untested, dimensions are approximate and floor plans are not to scale
- Through a Homewise Home For Life Plan people aged 60+ can secure this property for up to 59% less, by purchasing a Lifetime Lease.



20109342/20230103/LE/LE