



Guide Price
£300,000

Leasehold

2x  1x  1x 

**Home Farm Close,
Tadworth, Surrey, KT20**

OVER 60?

You could get up to
59% off the price!*

cubitt&west
Helping you move forwards



Main features

- Spacious ground floor maisonette
- Conveniently located for local shops and amenities
- Garage en bloc, ideal for storage
- Large communal garden area
- Only 0.8 miles to Tattenham Corner station with frequent links to London

Accommodation

GROUND FLOOR

Entrance Hall

Lounge: 15'8 x 10'8 (4.78m x 3.25m)

Kitchen: 11'1 x 7'8 (3.38m x 2.34m)

Bedroom 1: 11'1 x 10'8 (3.38m x 3.25m)

Bedroom 2: 12'0 x 7'9 (3.66m x 2.36m)

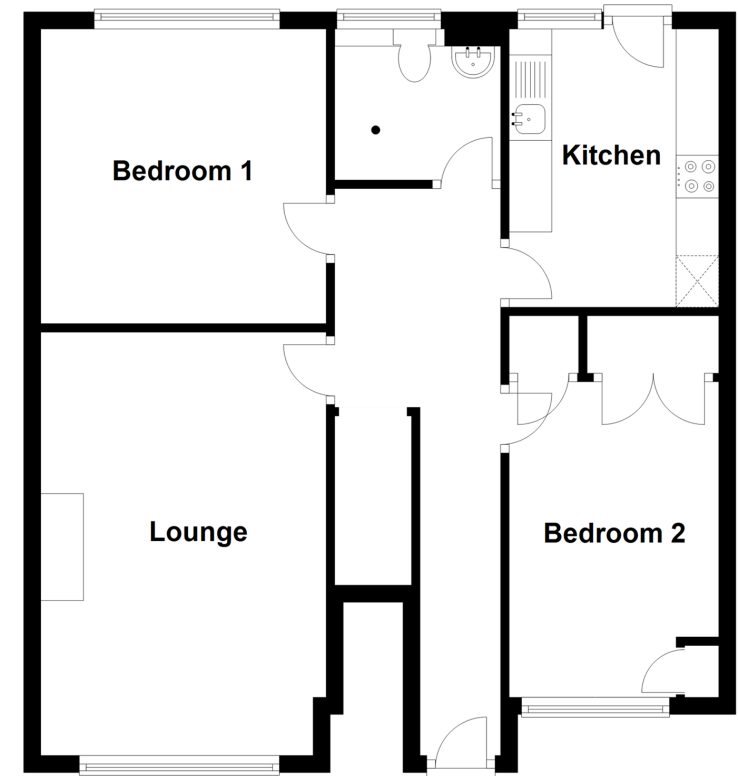
Wet Room

OUTSIDE

Communal Garden
Garage En Bloc

Ground Floor

Approx. 63.5 sq. metres (683.4 sq. feet)



Call Banstead - 01737 352233 ■ cubittandwest.co.uk

- Legal advice should be taken to verify fixtures/fittings, planning, alterations and/or lease details
- Appliances & services are untested, dimensions are approximate and floor plans are not to scale
- Our Homewise partnership offer a 'Home for Life' plan to buyers over 60, granting a lifetime lease for your protection and reducing the purchase price by up to 59%

