



**Price**

**£280,000**

**Leasehold**

2x  1x  1x 

**Brighton Road, Hooley,  
Coulsdon, Surrey, CR5**

**OVER 60?**

Secure this property  
for up to **59% less!**

**cubitt & west**  
Helping you move forwards





## Main features

- Large first floor maisonette
- Private garden
- Off Street Parking
- Large loft with potential to extend to with relevant permissions (STPP)
- Ideal location for M25 and great schools and stations surrounding

## Accommodation

### FIRST FLOOR

Kitchen: 9'1 x 7'7 (2.77m x 2.31m)

Lounge: 15'3 x 12'7 (4.65m x 3.84m)

Bedroom 1: 17'7 x 9'5 (5.36m x 2.87m)

Bedroom 2: 13'7 x 12'3 (4.14m x 3.74m)

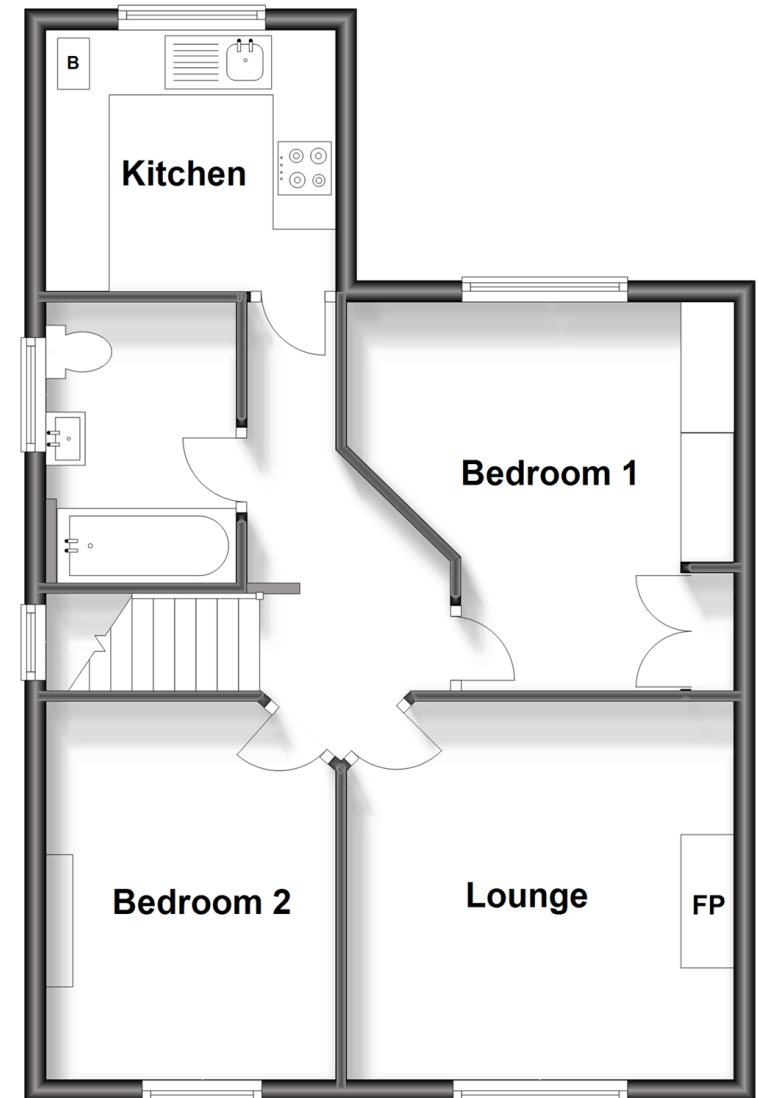
Bathroom

### OUTSIDE

Private Garden

## First Floor

Approx. 54.2 sq. metres (583.7 sq. feet)



**Call Banstead - 01737 352233 ■ [cubittandwest.co.uk](http://cubittandwest.co.uk)**

- Legal advice should be taken to verify fixtures/fittings, planning, alterations and/or lease details
- Appliances & services are untested, dimensions are approximate and floor plans are not to scale
- Through a Homewise Home For Life Plan people aged 60+ can secure this property for up to 59% less, by purchasing a Lifetime Lease.

