



**Price**  
**£269,950**

**Leasehold**

1x  1x  1x 

**Montbray Court, Ashurst  
Road, Tadworth, Surrey,  
KT20**

**cubitt&west**  
Helping you move forwards





## Main features

- Sleek grey fitted kitchen with stone composite work tops and integrated appliances
- Fully tiled bathroom with white Roca units and chrome fittings
- High quality timber engineered flooring and carpet to bedroom
- Communal parking and 10 year structural insurance warranty

## Accommodation

### SECOND FLOOR

Entrance Hall

Lounge/Kitchen: 16'4 x 14'9 (4.98m x 4.50m) plus 7'9 x 14'2 (2.36m x 4.32m)

Bedroom: 14'3 x 11'9 (4.35m x 3.58m)

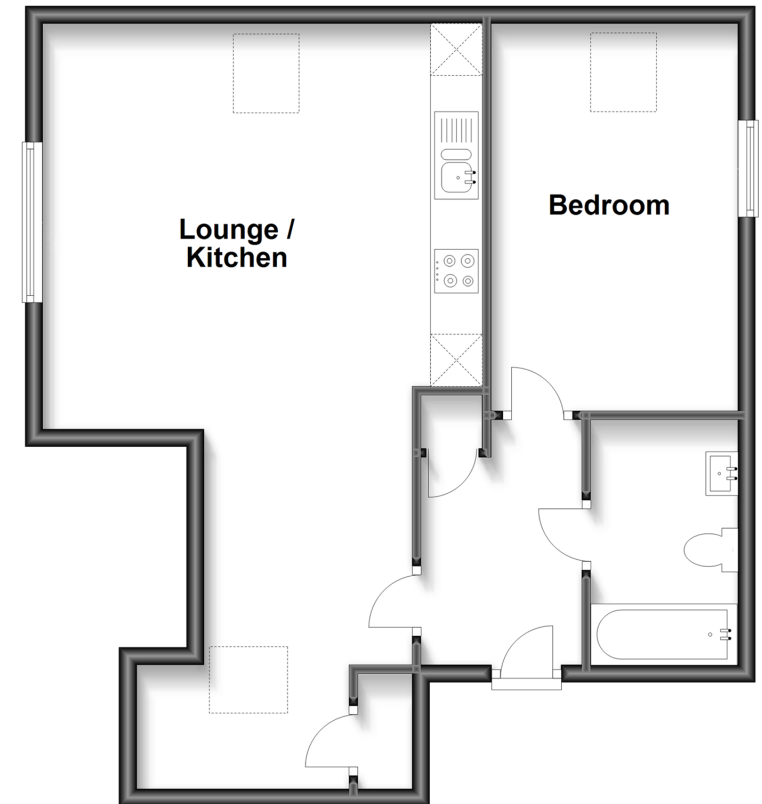
Bathroom

### OUTSIDE

Communal Grounds

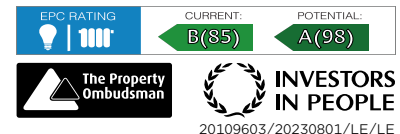
## Second Floor

Approx. 58.0 sq. metres (624.8 sq. feet)



**Call Banstead - 01737 352233 ■ [cubittandwest.co.uk](http://cubittandwest.co.uk)**

- Legal advice should be taken to verify fixtures/fittings, planning, alterations and/or lease details
- Appliances & services are untested, dimensions are approximate and floor plans are not to scale



20109603/20230801/LE/LE