



Price

£269,950

Leasehold

1x  1x  1x 

**Montbray Court, Ashurst
Road, Tadworth, Surrey,
KT20**

cubitt&west
Helping you move forwards



Main features

- Sleek grey fitted kitchen with stone composite work tops and integrated appliances
- Fully tiled bathroom with white Roca units and chrome fittings
- High quality timber engineered flooring and carpet to bedroom
- Communal parking and 10 year structural insurance warranty

Accommodation

SECOND FLOOR

Entrance Hall

Lounge/Kitchen: 16'4 x 14'9 (4.98m x 4.50m) plus 14'2 x 7'9 (4.32m x 2.36m)

Bedroom: 14'3 x 11'9 (4.35m x 3.58m)

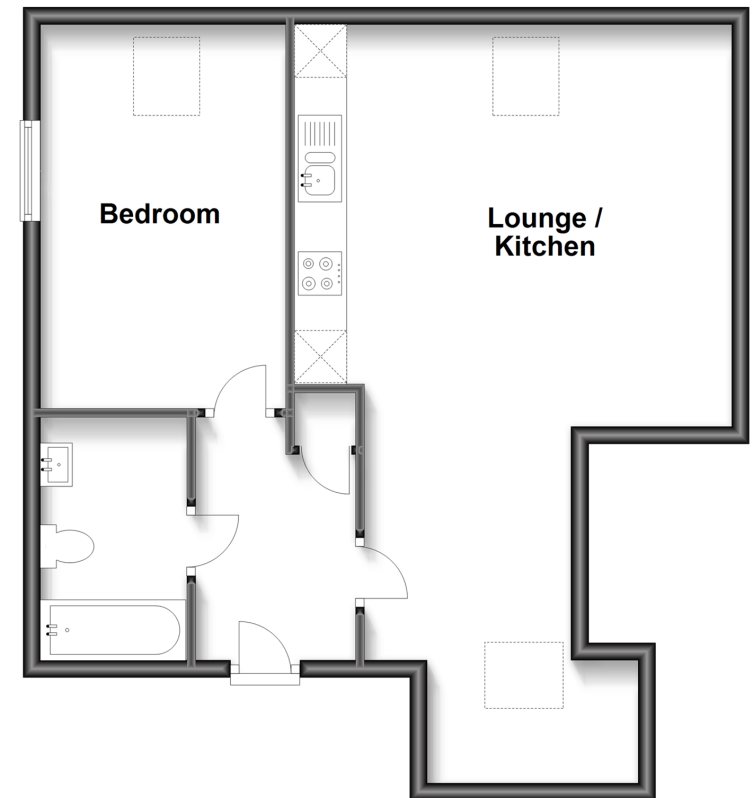
Bathroom

OUTSIDE

Communal Grounds

Second Floor

Approx. 57.0 sq. metres (613.7 sq. feet)



Call Banstead - 01737 352233 ■ cubittandwest.co.uk

- Legal advice should be taken to verify fixtures/fittings, planning, alterations and/or lease details
- Appliances & services are untested, dimensions are approximate and floor plans are not to scale



20109604/20230606/LE/LE