



Price
£599,000

Freehold

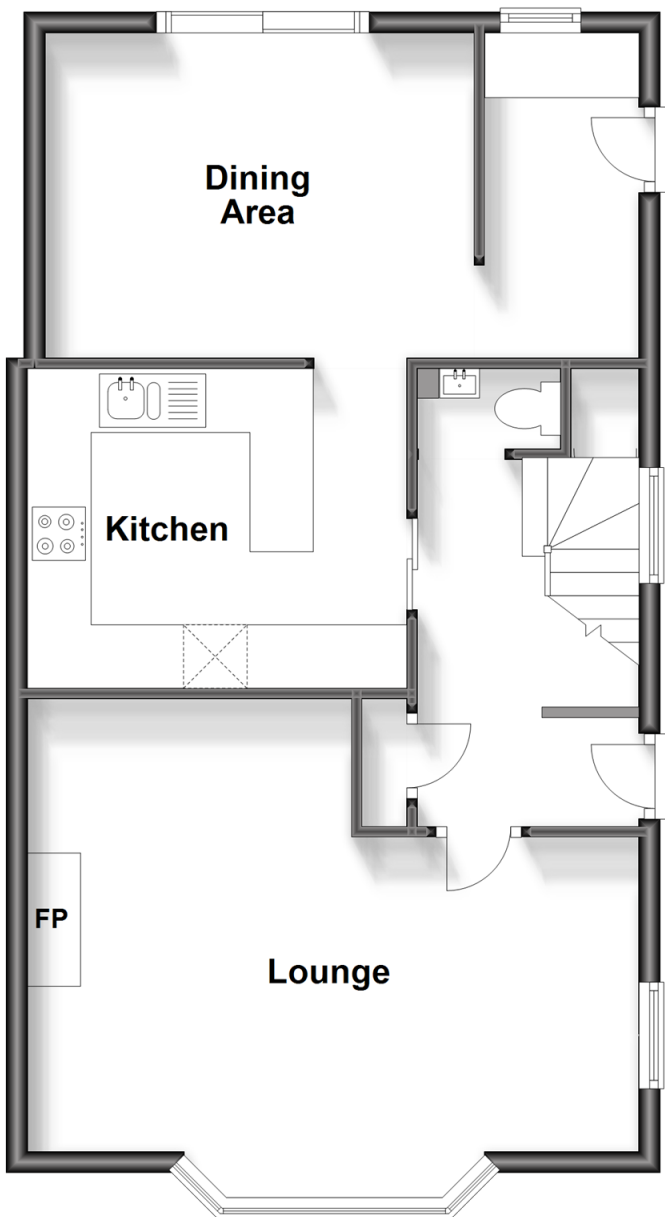
3x  1x  2x 

**Partridge Mead,
Banstead, Surrey, SM7**

cubitt&west
Helping you move forwards

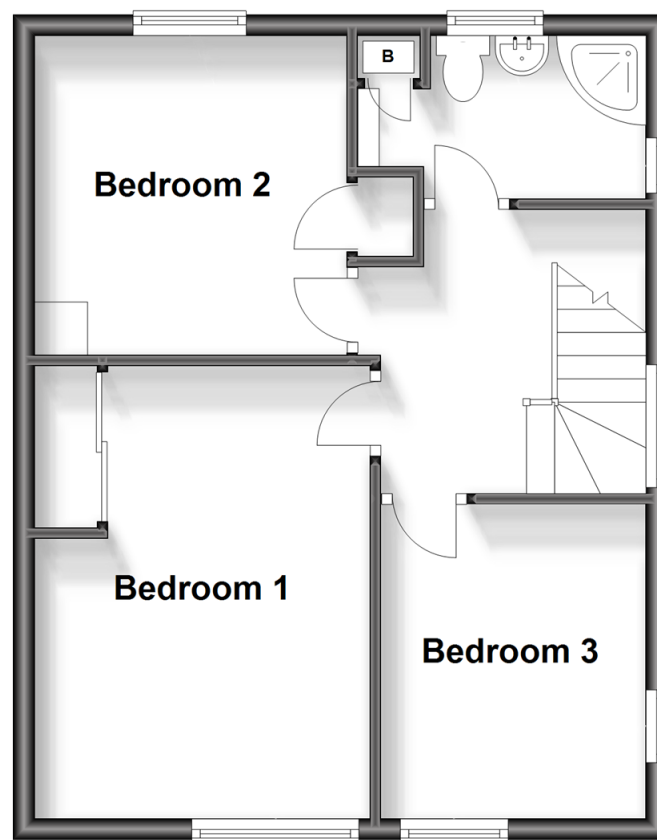
Ground Floor

Approx. 60.3 sq. metres (649.0 sq. feet)



First Floor

Approx. 42.3 sq. metres (455.0 sq. feet)



Accommodation

GROUND FLOOR

Lounge: 18'7 x 15'5 (5.67m x 4.70m)

Kitchen: 11'9 x 9'8 (3.58m x 2.95m)

Dining area: 13'0 x 9'8 (3.97m x 2.95m)

Utility room

FIRST FLOOR

Bedroom 1: 14'0 x 10'0 (4.27m x 3.05m)

Bedroom 2: 9'8 x 9'5 (2.95m x 2.87m)

Bedroom 3: 9'5 x 8'1 (2.87m x 2.47m)

Bathroom

OUTSIDE

Garden

Brick Outbuilding: 19'0 x 12'3 (5.80m x 3.74m)



Main features

- Extended end of terrace home with utility area spanning across 1104 sq. ft
- Situated on extensive plot with uniquely large rear garden (see photo of plot from Land Registry)
- Potential to extend further (STPP) and scope to put own stamp on
- Outbuilding with potential for office or workshop



Nearest Schools

Primary Schools: Warren Mead Junior School 0.3 miles, Shawley Community Primary 1.3 miles, Banstead Co-ed Preparatory School 1.6 miles

Secondary Schools: Epsom College 1.3 miles, The Beacon



Transport Information

Train Stations: Epsom Downs 0.4 miles, Banstead 0.8 miles, Tattenham Corner 1.1 miles
Underground Morden 5.7 miles, South Wimbledon 6.6 miles, Wimbledon 6.9 miles



Address

Partridge Mead, Banstead, Surrey, SM7



Directions

For directions to this property please contact us.



cubitt&west
Helping you move forwards

Call Banstead Branch 01737 352233 ■ cubittandwest.co.uk



■ Legal advice should be taken to verify fixtures/fittings, planning, alterations and/or lease details ■ Appliances & services are untested, dimensions are approximate and floor plans are not to scale



20109624/20231107/MS/LE