



**Guide Price**  
**£400,000**

**Leasehold**

3x  1x  2x 

**Beechen House,  
Brighton Road, Lower  
Kingswood, Tadworth,  
Surrey, KT20**

**OVER 60?**

Secure this property  
for up to **59% less!**

**cubitt&west**  
Helping you move forwards





## Main features

- Tastefully decorated ground floor maisonette
- Long lease no maintenance or ground rent charges
- Lovely garden with outside home office/store room
- Dining room doors open onto the garden
- Private parking for 2 cars to the rear

## Accommodation

### GROUND FLOOR

Dining Room: 9'3 x 5'6 (2.82m x 1.68m)

Kitchen/Living Room: 18'1 x 13'9 (5.52m x 4.19m)

Bedroom 3: 9'3 x 5'5 (2.82m x 1.65m)

Bedroom 2: 10'7 x 9'3 (3.23m x 2.82m)

Bedroom 1: 12'5 x 9'1 (3.79m x 2.77m)

Dressing Area

Bathroom

### OUTSIDE

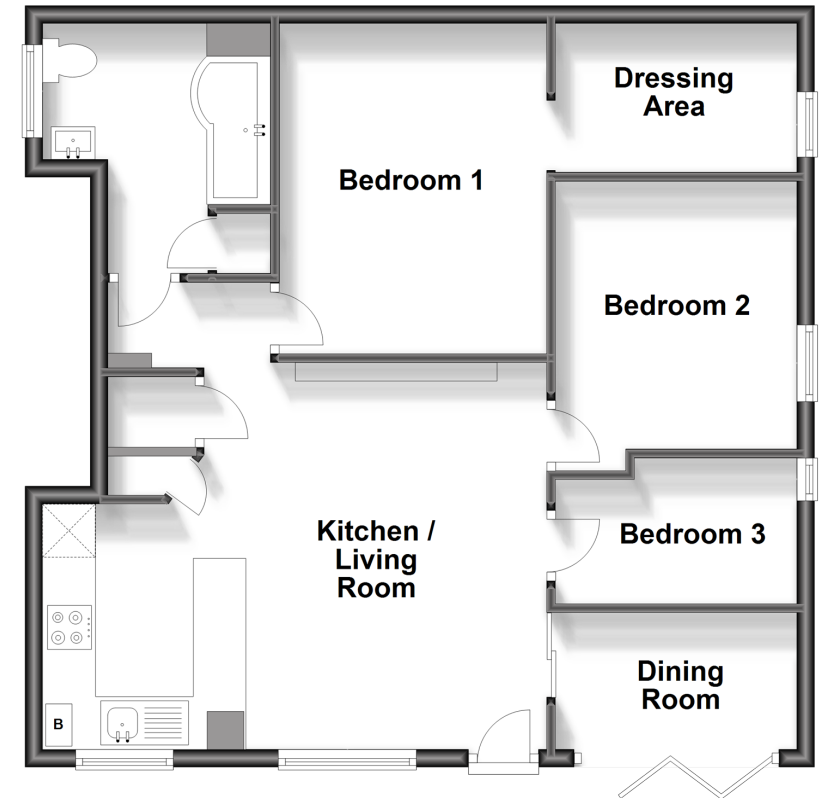
Rear Garden

Outside Office/Store Room

Off Road Parking

## Ground Floor

Approx. 67.9 sq. metres (731.1 sq. feet)



**Call Banstead - 01737 352233 ■ [cubittandwest.co.uk](http://cubittandwest.co.uk)**

- Legal advice should be taken to verify fixtures/fittings, planning, alterations and/or lease details
- Appliances & services are untested, dimensions are approximate and floor plans are not to scale
- Through a Homewise Home For Life Plan people aged 60+ can secure this property for up to 59% less, by purchasing a Lifetime Lease.

