



Guide Price
£900,000

Freehold

4x  2x  3x 

**Smithy Lane, Lower
Kingswood, Tadworth,
Surrey, KT20**

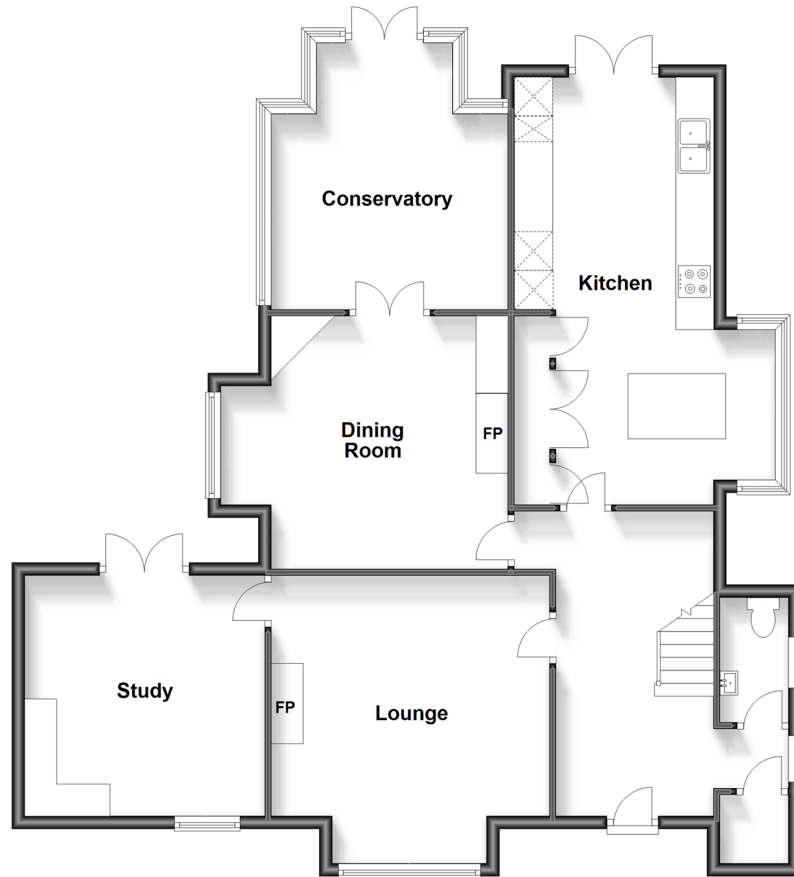
OVER 60?

Secure this property
for up to **59% less!**

cubitt&west
Helping you move forwards

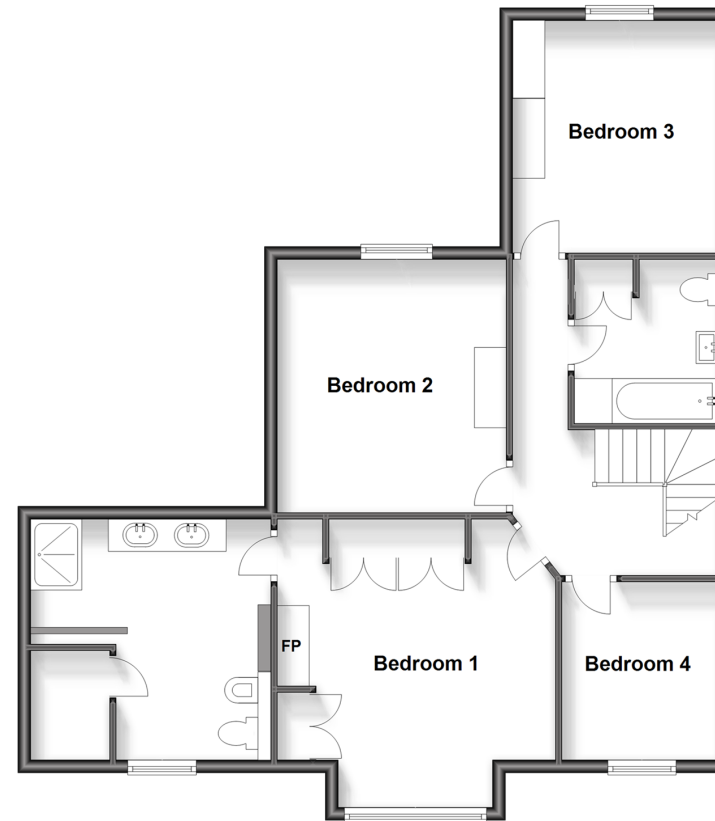
Ground Floor

Approx. 104.6 sq. metres (1125.9 sq. feet)



First Floor

Approx. 82.2 sq. metres (884.3 sq. feet)



Accommodation

GROUND FLOOR

Kitchen: 22'3 x 11'5 (6.79m x 3.48m)
Dining Room: 14'4 x 13'1 (4.37m x 3.99m)
Conservatory: 13'7 x 12'0 (4.14m x 3.66m)
Lounge: 14'11 x 12'0 (4.55m x 3.66m)
Study: 12'2 x 12'0 (3.71m x 3.66m)
WC
Double Garage

OUTSIDE

Rear Garden
Driveway

FIRST FLOOR

Bedroom One : 14'1 x 13'8 (4.30m x 4.17m)
Bedroom Two: 13'11 x 12'0 (4.24m x 3.66m)
Bedroom Three: 11'5 x 10'6 (3.48m x 3.20m)
Bedroom Four: 9'1 x 8'3 (2.77m x 2.52m)
En-Suite Shower Room
Bathroom



Main features

- Stunning detached Edwardian home with driveway and double garage
- Beautiful rear garden with plenty of character
- Extended throughout with sophisticated conservatory, large study and en-suite to bedroom one
- Lovingly updated throughout including modern kitchen/diner with under floor heating
- Great schools and vast surrounding green spaces



Nearest Schools

Primary Schools: Kingswood Primary 0.4 miles, Tadworth Primary 1.5 miles, Walton-on-the-Hill Primary 1.6 miles

Secondary Schools: St Margaret's School 1.6 miles, Royal Alexandra and Albert School 1.7 miles, St Bede's School



Transport Information

Train Stations: Kingswood 1.5 miles, Tadworth 1.6 miles, Reigate 2.1 miles

Underground Morden 8.9 miles, South Wimbledon 9.8 miles, Colliers Wood 10. miles



Address

Smithy Lane, Lower Kingswood, Tadworth, Surrey, KT20



Directions

For directions to this property please contact us.



cubitt&west
Helping you move forwards

Call Banstead Branch 01737 352233 ■ [cubittandwest.co.uk](https://www.cubittandwest.co.uk)



■ Legal advice should be taken to verify fixtures/fittings, planning, alterations and/or lease details ■ Appliances & services are untested, dimensions are approximate and floor plans are not to scale
■ Through a Homewise Home For Life Plan people aged 60+ can secure this property for up to 59% less, by purchasing a Lifetime Lease.



20109649/20231216/GM/YK