



Price
£650,000

Freehold

3x  1x  2x 

**Pine Walk, Banstead,
Surrey, SM7**

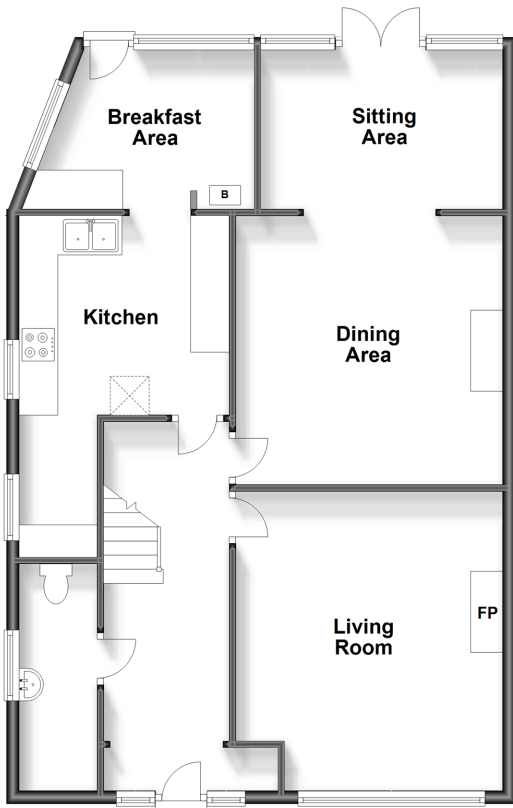
OVER 60?

Secure this property
for up to **59% less!**

cubitt&west
Helping you move forwards

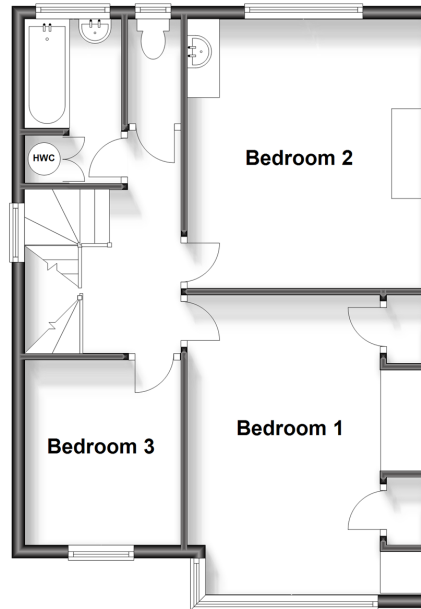
Ground Floor

Approx. 84.5 sq. metres (909.0 sq. feet)



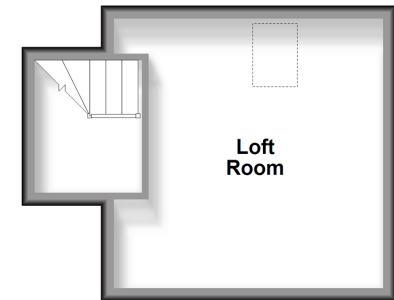
First Floor

Approx. 52.8 sq. metres (568.6 sq. feet)



Second Floor

Approx. 19.9 sq. metres (214.1 sq. feet)



Accommodation

GROUND FLOOR

Hallway
 Living Room: 15'1 x 13'5 (4.60m x 4.09m)
 Dining Room: 13'5 x 13'5 (4.09m x 4.09m)
 Sitting Area: 12'5 x 8'3 (3.79m x 2.52m)
 Kitchen: 10'8 x 9'1 (3.25m x 2.77m)
 Breakfast Area: 8'3 x 5'9 (2.52m x 1.75m)
 Cloakroom

FIRST FLOOR

Bedroom 1: 14'1 x 11'8 (4.30m x 3.56m)
 Bedroom 2: 13'5 x 11'8 (4.09m x 3.56m)
 Bedroom 3: 8'2 x 8'1 (2.49m x 2.47m)
 Bathroom

SECOND FLOOR

Loft Room: 6'9 x 5'1 (2.06m x 1.55m)

OUTSIDE

Driveway
 Garage
 Rear Garden



Main features

- Walking distance to Chipstead Valley Primary School
- Larger than average family home
- Loft room, ideal for conversion subject to planning permission
- Located on popular residential road
- Large sunny garden, drive & garage
- Option to extend (STPP)



Nearest Schools

Primary Schools: Chipstead Valley Primary 0.4 miles, Smitham Primary 0.7 miles, St Aidan's Catholic Primary 0.7 miles

Secondary Schools: Woodcote High School 1.6 miles,



Transport Information

Train Stations: Chipstead 0.3 miles, Woodmansterne 0.6 miles, Coulsdon South 1.3 miles

Underground Morden 6.1 miles, South Wimbledon 7.0 miles, Colliers Wood 7.1 miles



Address

Pine Walk, Banstead, Surrey, SM7



Directions

For directions to this property please contact us.



cubitt&west
Helping you move forwards

Call Banstead Branch 01737 352233 ■ [cubittandwest.co.uk](https://www.cubittandwest.co.uk)



■ Legal advice should be taken to verify fixtures/fittings, planning, alterations and/or lease details ■ Appliances & services are untested, dimensions are approximate and floor plans are not to scale
■ Through a Homewise Home For Life Plan people aged 60+ can secure this property for up to 59% less, by purchasing a Lifetime Lease.



20109652/20230629/SR/YK