



OVER 60?

Secure this property
for up to **59% less!**

Price
£525,000

Freehold

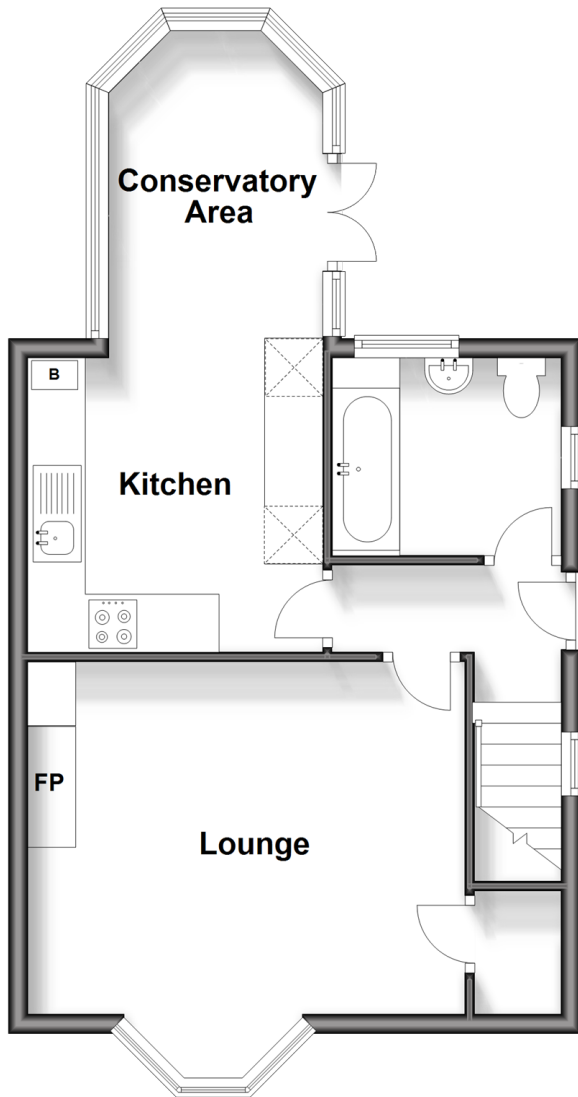
3x  1x  1x 

**Howard Close, Walton
On The Hill, Tadworth,
Surrey, KT20**

cubitt&west
Helping you move forwards

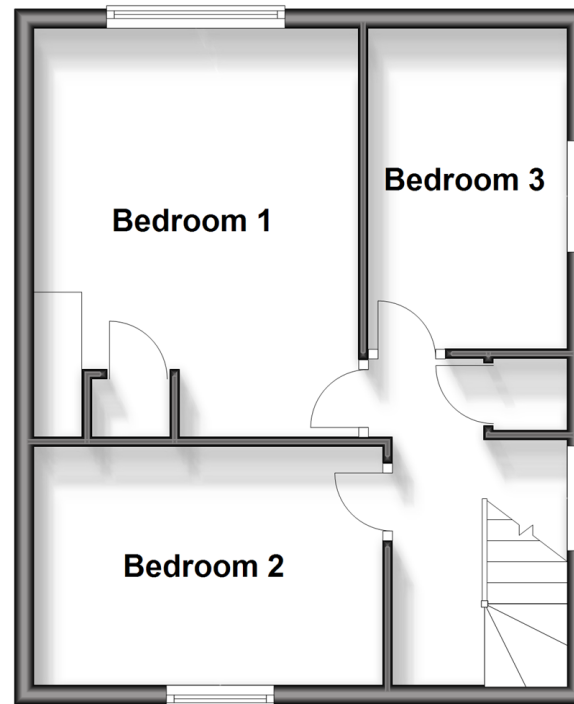
Ground Floor

Approx. 45.1 sq. metres (485.2 sq. feet)



First Floor

Approx. 37.7 sq. metres (406.2 sq. feet)



Accommodation

GROUND FLOOR

Entrance Hallway

Lounge: 14'9 x 11'9 (4.50m x 3.58m)

Kitchen: 9'8 x 9'8 (2.95m x 2.95m)

Conservatory Area: 11'4 x 7'8 (3.46m x 2.34m)

Bathroom

FIRST FLOOR

Landing

Bedroom 1: 14'5 x 10'8 (4.40m x 3.25m)

Bedroom 2: 12'1 x 8'1 (3.69m x 2.47m)

Bedroom 3: 10'9 x 6'7 (3.28m x 2.01m)

OUTSIDE

Driveway

Rear Garden



Main features

- Beautifully presented semi-detached cottage style home with driveway
- Lovingly updated throughout including new double glazing
- Stunning panoramic views across green opposite
- Envious, quiet cul-de-sac location in the heart of Walton on the Hill
- Spacious rooms throughout and great size garden with side access



Nearest Schools

Primary Schools: Walton-on-the-Hill Primary 0.4 miles, Tadworth Primary 1.4 miles, The Vale Primary 1.7 miles
Secondary Schools: St Margaret's School 1.6 miles, City of London Freemans' School 2.5 miles, The Beacon School 2.9 miles



Transport Information

Train Stations: Tadworth 1.0 miles, Tattenham Corner 1.9 miles, Kingswood 2.0 miles



Address

Howard Close, Walton On The Hill, Tadworth, Surrey, KT20



Directions

For directions to this property please contact us.



cubitt&west
Helping you move forwards

Call Banstead Branch 01737 352233 ■ [cubittandwest.co.uk](https://www.cubittandwest.co.uk)



■ Legal advice should be taken to verify fixtures/fittings, planning, alterations and/or lease details ■ Appliances & services are untested, dimensions are approximate and floor plans are not to scale
■ Through a Homewise Home For Life Plan people aged 60+ can secure this property for up to 59% less, by purchasing a Lifetime Lease.



20109691/20240221/MS/MS