



Guide Price
£900,000

Freehold

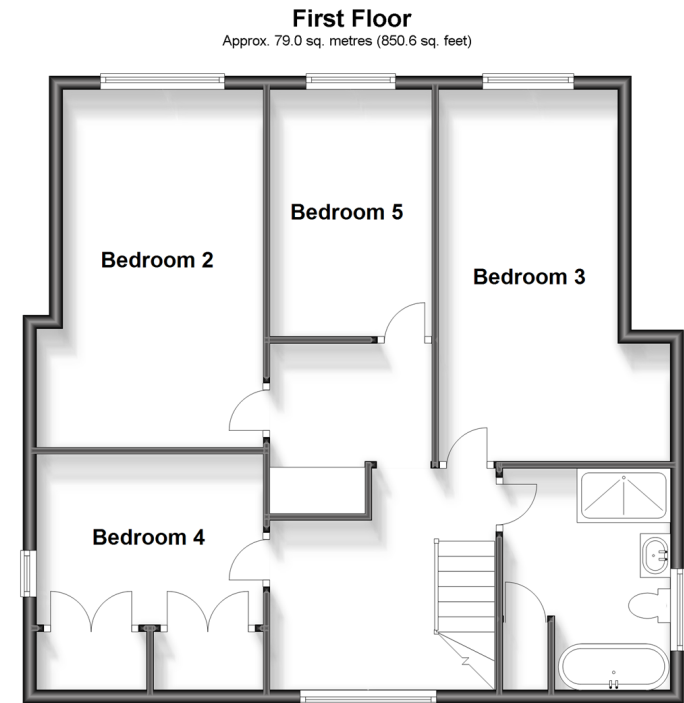
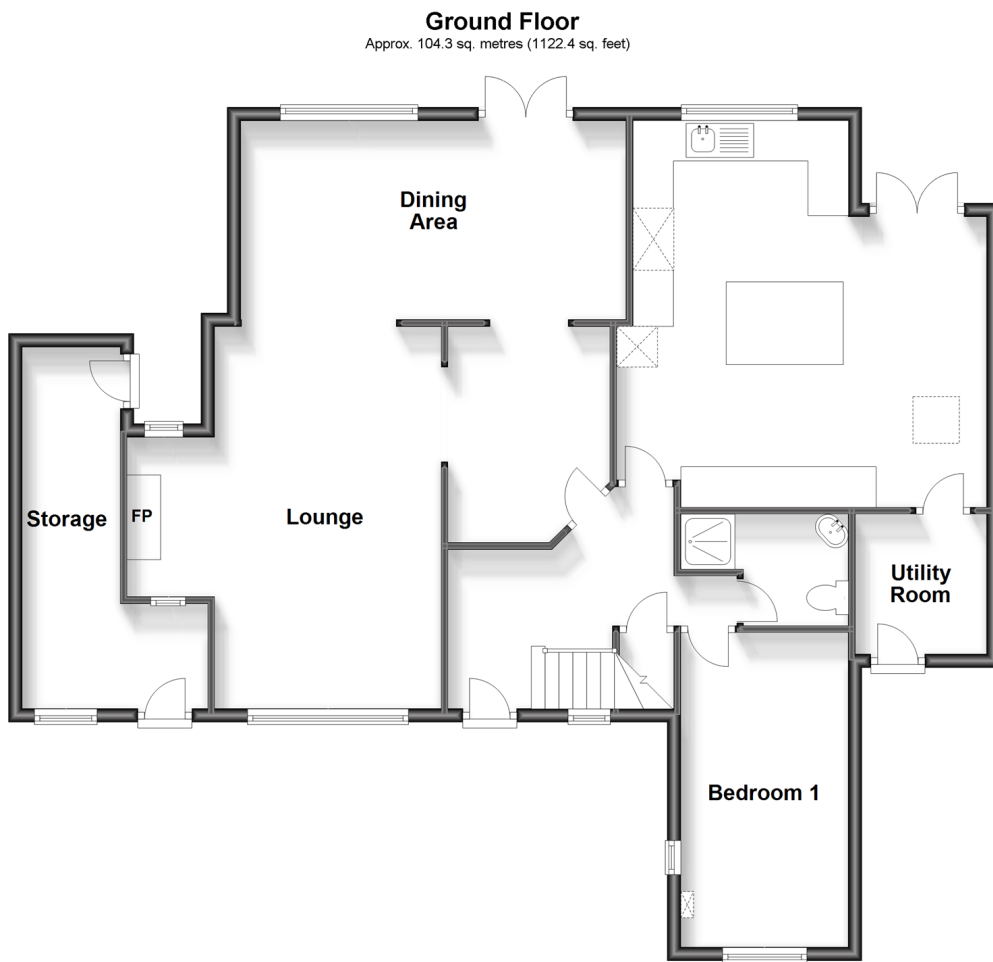
5x  2x  2x 

**Reigate Road, Ewell,
Surrey, KT17**

OVER 60?

Secure this property
for up to **59% less!**

cubitt&west
Helping you move forwards



Accommodation

GROUND FLOOR

Entrance Hall

Lounge: 18'6 x 15'1 (5.64m x 4.60m)

Dining Area: 18'9 x 9'9 (5.72m x 2.97m)

Bedroom One: 15'3 x 8'0 (4.65m x 2.44m)

Kitchen: 18'1 x 17'9 (5.52m x 5.41m)

Shower Room

Utility Room

FIRST FLOOR

First Floor Landing

Bedroom Two: 18'3 x 11'3 (5.57m x 3.43m)

Bedroom Three: 17'3 x 10'9 (5.26m x 3.28m)

Bedroom Four: 11'0 x 10'9 (3.36m x 3.28m)

Bedroom Five: 12'0 x 8'0 (3.66m x 2.44m)

Bathroom

OUTSIDE

Front Garden

Rear Garden

Driveway

Summer House



Main features

- Beautiful detached home with large driveway
- Extensive rear garden with stunning views of surrounding greenery
- Large rooms throughout with open plan kitchen/diner with stunning island
- Two bathrooms, separate utility room and plenty of storage throughout
- Perfect home for a family with great schools and transport links



Nearest Schools

Primary Schools: Warren Mead Junior School 0.3 miles, Shawley Community Primary 0.6 miles, Epsom Downs Primary and Children's Centre 1.1 miles

Secondary Schools: Epsom College 0.6 miles, The Beacon



Transport Information

Train Stations: Epsom Downs 0.3 miles, Banstead 1.0 miles, Tattenham Corner 1.1 miles

Underground Morden 5.7 miles, South Wimbledon 6.7 miles, Wimbledon 6.9 miles



Address

Reigate Road, Ewell, Surrey, KT17



Directions

For directions to this property please contact us.



cubitt&west
Helping you move forwards

Call Banstead Branch 01737 352233 ■ cubittandwest.co.uk



■ Legal advice should be taken to verify fixtures/fittings, planning, alterations and/or lease details ■ Appliances & services are untested, dimensions are approximate and floor plans are not to scale
■ Through a Homewise Home For Life Plan people aged 60+ can secure this property for up to 59% less, by purchasing a Lifetime Lease.



20109722/20231227/MS/MS