



Price
£515,000

Freehold

4x  2x  2x 

**Hatch Gardens,
Tadworth, Epsom, KT20**

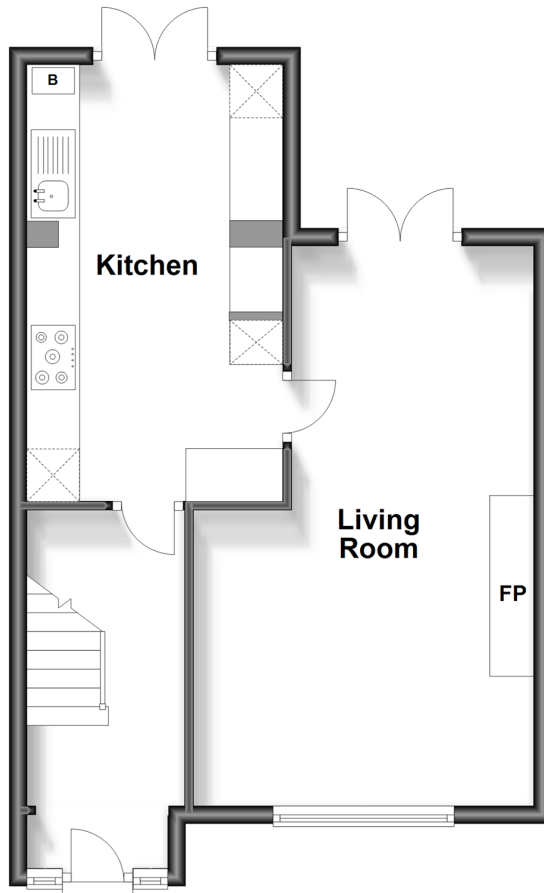
OVER 60?

Secure this property
for up to **59% less!**

cubitt&west
Helping you move forwards

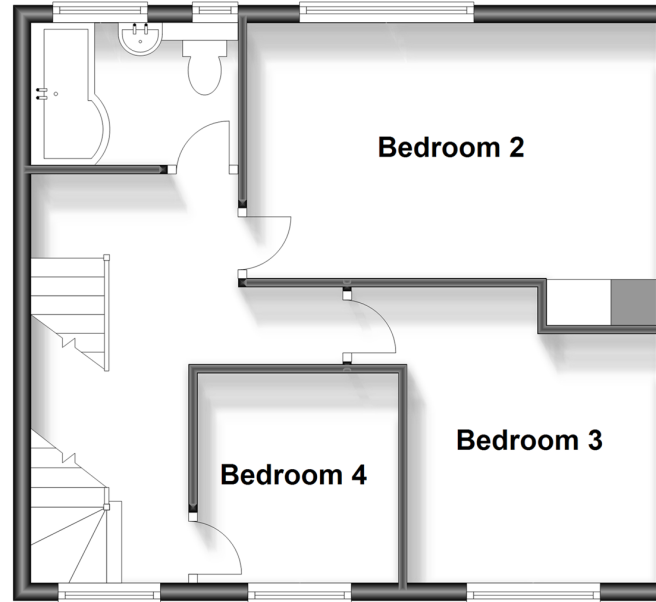
Ground Floor

Approx. 43.6 sq. metres (469.4 sq. feet)



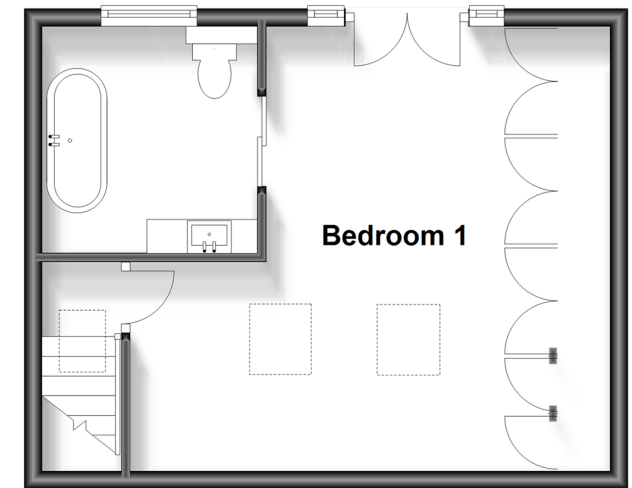
First Floor

Approx. 45.1 sq. metres (485.3 sq. feet)



Second Floor

Approx. 33.2 sq. metres (357.8 sq. feet)



Accommodation

GROUND FLOOR

Entrance Hall

Kitchen: 16'2 x 9'6 (4.93m x 2.90m)

Living Room: 21'2 x 12'7 (6.46m x 3.84m)

FIRST FLOOR

Bedroom 2: 15'2 x 9'1 (4.63m x 2.77m)

Bedroom 3: 11'7 x 9'6 (3.53m x 2.90m)

Bedroom 4: 8'3 x 7'4 (2.52m x 2.24m)

Bathroom

SECOND FLOOR

Bedroom 1: 18'3 x 15'9 (5.57m x 4.80m)

En-suite

OUTSIDE

Driveway

Rear Garden

Outbuilding: 16'7 x 11'10 (5.06m x 3.61m)



Main features

- Immaculately presented mid terraced home which has been extended throughout
- Stunning loft extension with luxury en-suite and Juliet balcony
- Landscaped garden with out-building currently used as bar but potential for home office or gym
- Driveway for 2 cars with electric car charging point
- Great location for schools, transport and shops



Nearest Schools

Primary Schools: Epsom Downs Primary and Children's Centre 0.9 miles, Shawley Community Primary 1.1 miles, Tadworth Primary 1.8 miles

Secondary Schools: The Beacon School 1.7 miles, St



Transport Information

Train Stations: Tattenham Corner 0.7 miles, Kingswood 0.8 miles, Tadworth 0.9 miles

Underground Morden 6.9 miles, South Wimbledon 7.8 miles, Colliers Wood 8.1 miles



Address

Hatch Gardens, Tadworth, Epsom, KT20



Directions

For directions to this property please contact us.



cubitt&west
Helping you move forwards

Call Banstead Branch 01737 352233 ■ [cubittandwest.co.uk](https://www.cubittandwest.co.uk)



■ Legal advice should be taken to verify fixtures/fittings, planning, alterations and/or lease details ■ Appliances & services are untested, dimensions are approximate and floor plans are not to scale
■ Through a Homewise Home For Life Plan people aged 60+ can secure this property for up to 59% less, by purchasing a Lifetime Lease.



20109738/20231021/MS/MS