



Guide Price
£650,000

Freehold

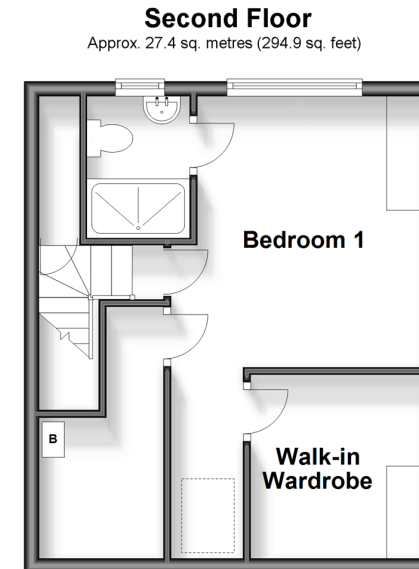
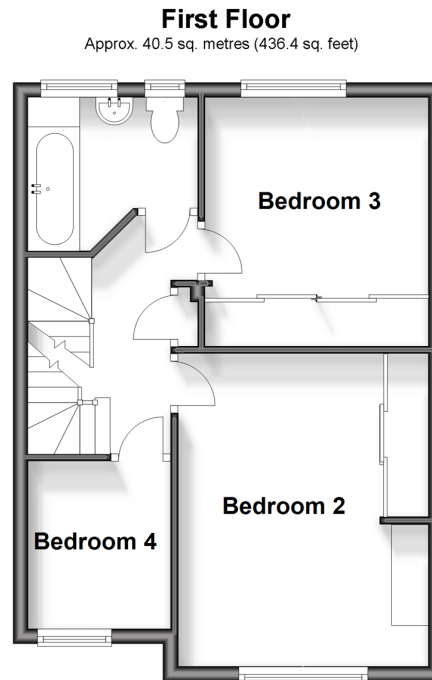
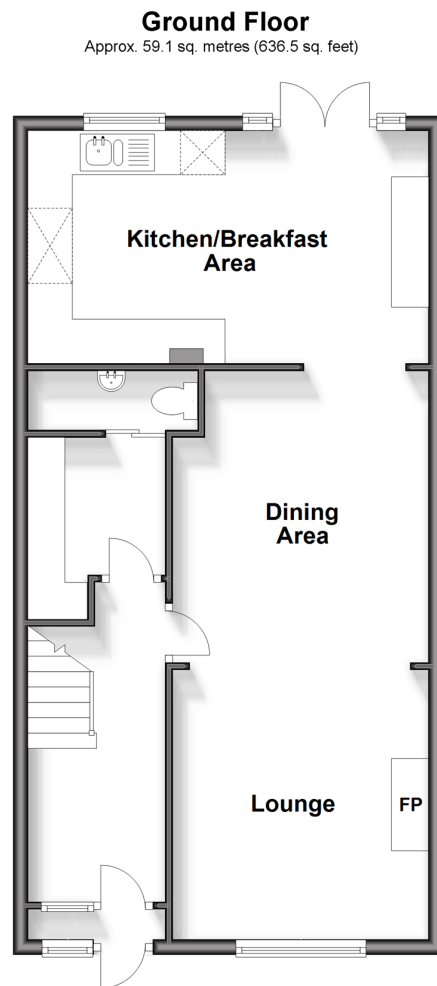
4x  2x  2x 

**Meadowview Road,
Epsom, Surrey, KT19**

OVER 60?

Secure this property
for up to **59% less!**

cubitt&west
Helping you move forwards



Accommodation

GROUND FLOOR

Porch
Entrance Hall
Store Room/Cloakroom: 8'1 x 5'10
(2.47m x 1.78m)
Lounge : 12'2 x 11'3 (3.71m x 3.43m)
Dining Room: 13'0 x 11'3 (3.97m x 3.43m)
Kitchen/Breakfast Room: 16'7 x 10'3
(5.06m x 3.13m)

FIRST FLOOR

Landing
Bedroom 2: 13'9 x 11'0 (4.19m x 3.36m)
Bedroom 3: 11'5 x 9'10 (3.48m x 3.00m)
Bedroom 4: 6'11 x 6'0 (2.11m x 1.83m)
Bathroom

SECOND FLOOR

Landing
Bedroom 1: 11'8 x 8'7 (3.56m x 2.62m)
En-Suite Shower Room
Walk In Wardrobe: 8'7 x 7'10 (2.62m x 2.39m)
Store Room: 9'2 x 5'10 (2.80m x 1.78m)

OUTSIDE

Driveway
Rear Garden
Detached Garage



Main features

- Deceptively large terraced home with through lounge/diner that leads to 16ft kitchen
- Fabulous decking area that can be used throughout the year
- Substantial garden with separate garage
- Accommodation spread across three floors with en-suite and walk in wardrobe to bedroom one
- Three stations within one mile including Ewell West minutes walk away



Nearest Schools

Primary Schools: St Clement's Catholic Primary 0.1 miles, Danetree Junior School 0.6 miles, Epsom Primary 0.8 miles
Secondary Schools: Blenheim High School 0.4 miles, Ewell Castle School 0.5 miles, Glyn Technology School 0.5 miles



Transport Information

Train Stations: Ewell West 0.1 miles, Ewell East 0.8 miles, Stoneleigh 1.0 miles



Address

Meadowview Road, Epsom, Surrey, KT19



Directions

For directions to this property please contact us.



cubitt&west
Helping you move forwards

Call Banstead Branch 01737 352233 ■ [cubittandwest.co.uk](https://www.cubittandwest.co.uk)



■ Legal advice should be taken to verify fixtures/fittings, planning, alterations and/or lease details ■ Appliances & services are untested, dimensions are approximate and floor plans are not to scale
■ Through a Homewise Home For Life Plan people aged 60+ can secure this property for up to 59% less, by purchasing a Lifetime Lease.



20109818/20240316/SA/MS