



Guide Price
£650,000

Freehold

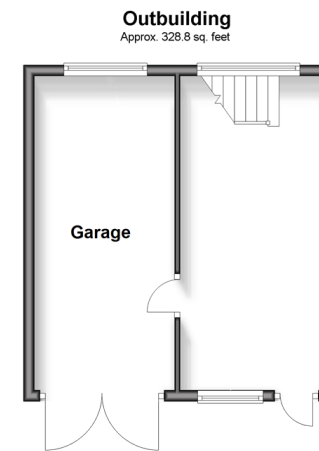
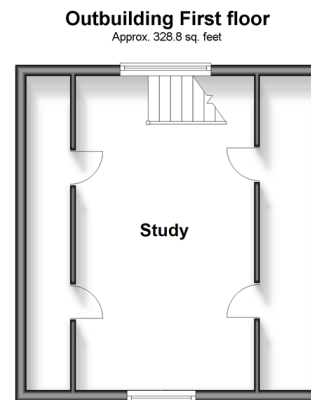
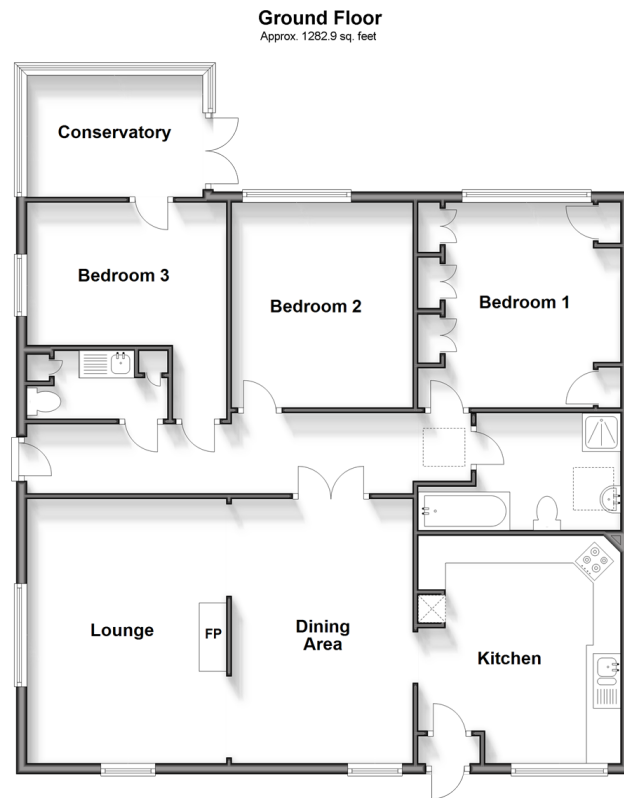
3x  1x  1x 

**Station Road, Loxwood,
West Sussex, RH14**

OVER 60?

Secure this property
for up to **59% less!**

cubitt&west
Helping you move forwards



Accommodation

GROUND FLOOR

Entrance Hallway
 Kitchen: 13'5 x 12'10 (4.09m x 3.91m)
 Dining Area: 15'10 x 10'10 (4.83m x 3.30m)
 Lounge: 15'10 x 11'11 (4.83m x 3.63m)
 Bathroom
 Bedroom 1: 12'4 x 12'1 (3.76m x 3.69m)
 Bedroom 2: 12'4 x 10'10 (3.76m x 3.30m)
 Family Room / Bedroom 3: 11'10 x 8'7 (3.61m x 2.62m)
 Conservatory: 10'7 x 7'4 (3.23m x 2.24m)
 Utility Room

OUTBUILDING FIRST FLOOR

Study: 19'0 x 7'0 (5.80m x 2.14m)

OUTBUILDING

Garage: 19'6 x 8'7 (5.95m x 2.62m)
 Store: 19'0 x 8'8 (5.80m x 2.64m)

OUTSIDE

Front Garden
 Rear Garden
 Summer House
 Off Road Parking



Main features

- Spacious detached bungalow
- Garage with Store and Study above
- Lots of off road parking to the front
- Private manageable rear garden
- Popular village location within a short walk of a doctors surgery and a highly regarded private school



Nearest Schools

Primary Schools: Loxwood Primary 0.2 miles, Plaistow and Kirdford Primary 3.3 miles, Rudgwick Primary 3.6 miles

Secondary Schools: Penthorpe School (private) 3.4 miles, The Weald School 6.2 miles, Glebelands 6.6 miles



Transport Information

Train Stations: Billingshurst 6.2 miles, Christs Hospital 11.1 miles, Warnham 12.3 miles, Horsham 12.5 miles



Address

Station Road, Loxwood, West Sussex, RH14



Directions

For directions to this property please contact us.



cubitt&west
Helping you move forwards

Call Cranleigh Branch 01483 271567 ■ cubittandwest.co.uk



■ Legal advice should be taken to verify fixtures/fittings, planning, alterations and/or lease details ■ Appliances & services are untested, dimensions are approximate and floor plans are not to scale
■ Through a Homewise Home For Life Plan people aged 60+ can secure this property for up to 59% less, by purchasing a Lifetime Lease.



20301175/20240513/RD/RD