



**Price**

**£375,000**

**Leasehold**

2x  2x  1x 

**Monks Manor,  
Honeywood Lane,  
Okewoodhill, Dorking,  
Surrey, RH5**

**OVER 60?**

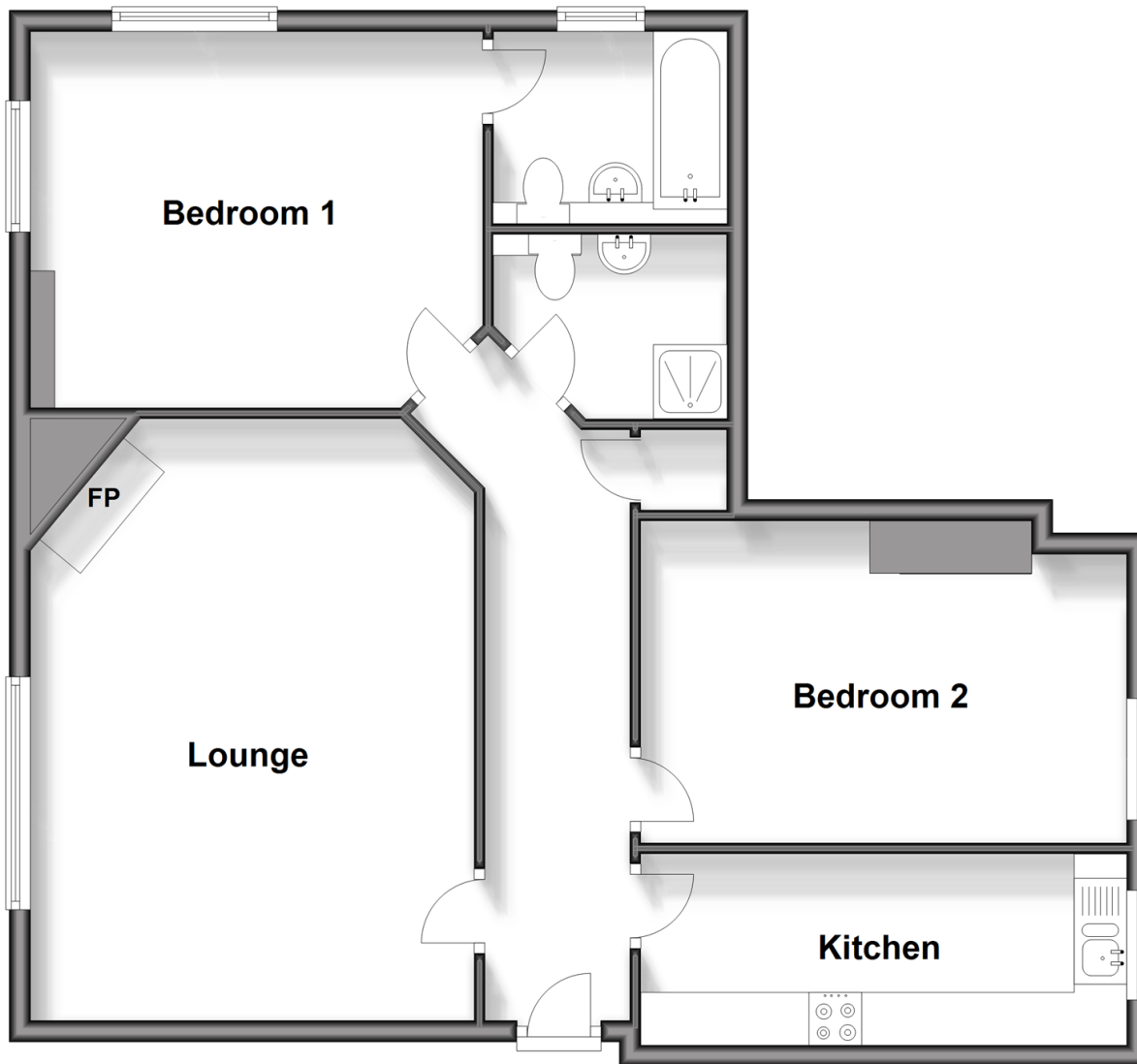
Secure this property  
for up to **59% less!**

**cubitt&west**  
Helping you move forwards



## First Floor

Approx. 80.5 sq. metres (867.0 sq. feet)



## Accommodation

### FIRST FLOOR

Entrance Hallway

Kitchen: 15'4 x 5'10 (4.68m x 1.78m)

Lounge: 18'3 x 14'4 (5.57m x 4.37m)

Bedroom 1: 13'11 x 12'0 (4.24m x 3.66m)

En Suite

Bedroom 2: 15'1 x 9'5 (4.60m x 2.87m)

### OUTSIDE

Garage

Allocated Parking

Communal Gardens

Tennis Courts

Swimming Pool



## Main features

- Two bedroom and two bathroom spacious apartment
- Large lounge/diner with wood burner
- Parking and garage with storage space
- On site equestrian facilities
- Extensive communal grounds with swimming pool, tennis courts and use of allotments



### Nearest Schools

Primary Schools: Scott Broadwood CofE Capel 4.2 miles, The Weald CofE Beare Green 4.7 miles

Secondary Schools: Farlington (private) 4.1 miles, Glebelands 6.3 miles, Cranleigh School (private) 7.9 miles



### Transport Information

Train Stations: Ockley 3.1 miles, Warnham 5.6 miles, Gomshall 8.9 miles, Dorking 9.8 miles



### Address

Monks Manor, Honeywood Lane, Okewoodhill, Dorking, Surrey, RH5



### Directions

For directions to this property please contact us.





**cubitt&west**  
Helping you move forwards

Call Cranleigh Branch 01483 271567 ■ [cubittandwest.co.uk](https://cubittandwest.co.uk)



■ Legal advice should be taken to verify fixtures/fittings, planning, alterations and/or lease details ■ Appliances & services are untested, dimensions are approximate and floor plans are not to scale  
■ Through a Homewise Home For Life Plan people aged 60+ can secure this property for up to 59% less, by purchasing a Lifetime Lease.



20306125/20240511/CH/KAB