



Price

£300,000

Leasehold

2x  1x  1x 

Sarus Place, Cranleigh, Surrey, GU6

cubitt&west
Helping you move forwards



Main features

- Modern top floor flat with double bedrooms
- Spacious & bright lounge/diner
- Communal garden
- Allocated parking & bike store
- Close to shops & many local amenities

Accommodation

SECOND FLOOR

Entrance Hall

Lounge/Diner: 21'0 x 12'0 (6.41m x 3.66m)

Kitchen: 10'3 x 6'10 (3.13m x 2.08m)

Bedroom 1: 13'0 x 10'5 (3.97m x 3.18m)

Bedroom 2: 13'1 x 10'2 (3.99m x 3.10m)

Bathroom

OUTSIDE

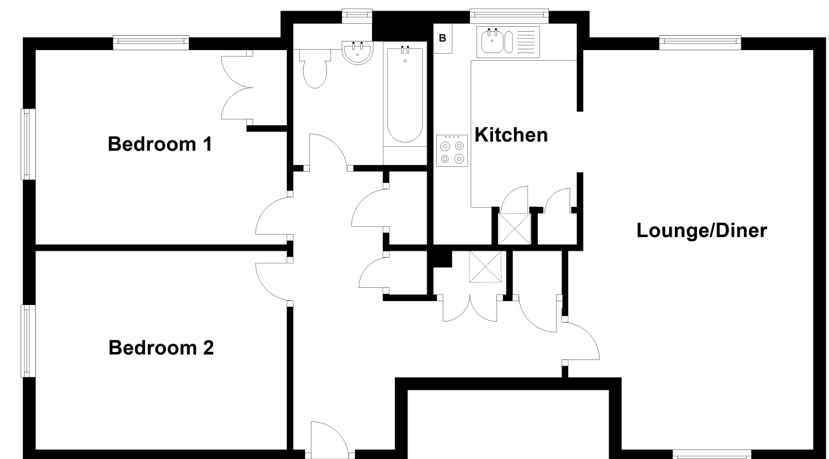
Communal Garden

Bike Store

Allocated Parking Space

Second Floor

Approx. 76.3 sq. metres (821.5 sq. feet)



Call Cranleigh - 01483 271567 ■ cubittandwest.co.uk

- Legal advice should be taken to verify fixtures/fittings, planning, alterations and/or lease details
- Appliances & services are untested, dimensions are approximate and floor plans are not to scale



20306265/20221214/CH/RD