



**Price**

**£160,000**

**Leasehold**

2x  1x  1x 

**Ilford Court, Cranleigh,  
Surrey, GU6**

**OVER 60?**

Secure this property  
for up to **59% less!**



**Video Tour available**

**cubitt&west**  
Helping you move forwards





## Main features

- Over 60's living with a huge variety of clubs available
- Great onsite facilities including a restaurant, shop, library, hair salon and wellness centre
- Good size apartment with the benefit of bedroom two having a juliet balcony
- Already fitted with a stair lift

## Accommodation

### GROUND FLOOR

Entrance Hallway

### FIRST FLOOR

Lounge/Diner: 16'4 x 14'8 (4.98m x 4.47m)

Kitchen: 10'0 x 6'6 (3.05m x 1.98m)

Bath/Shower Room

Bedroom 1: 12'9 x 10'4 (3.89m x 3.15m)

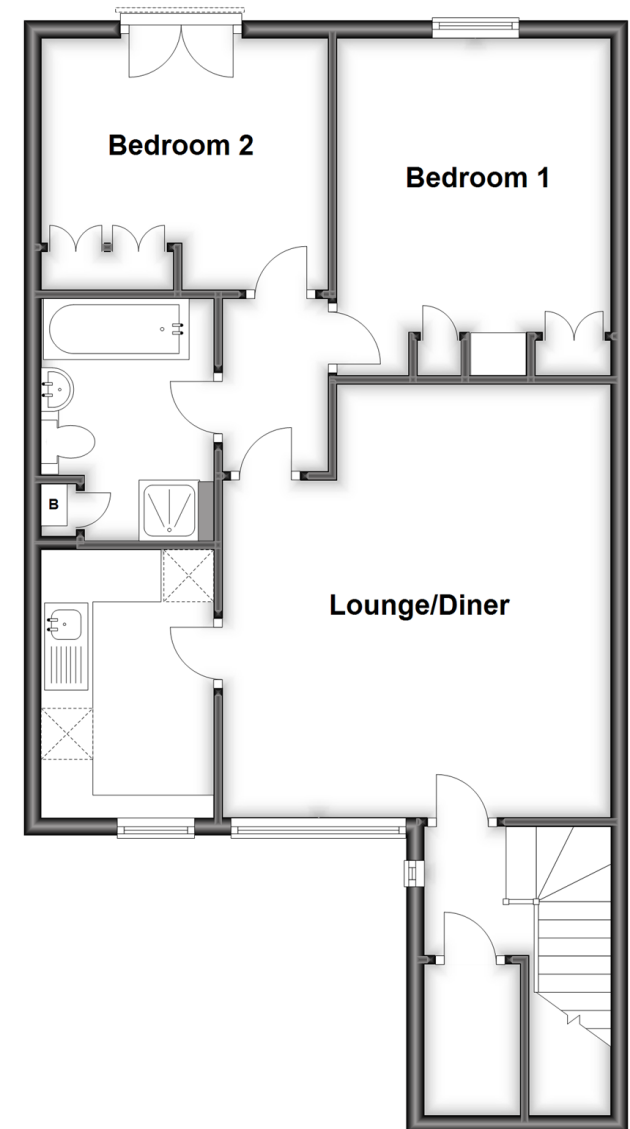
Bedroom 2: 10'9 x 9'9 (3.28m x 2.97m)

OUTSIDE

Communal Gardens

## First Floor

Approx. 67.0 sq. metres (720.9 sq. feet)



**Call Cranleigh - 01483 271567 ■ [cubittandwest.co.uk](http://cubittandwest.co.uk)**

- Legal advice should be taken to verify fixtures/fittings, planning, alterations and/or lease details
- Appliances & services are untested, dimensions are approximate and floor plans are not to scale
- Through a Homewise Home For Life Plan people aged 60+ can secure this property for up to 59% less, by purchasing a Lifetime Lease.



20306436/20230525/KAB/KAB