



OVER 60?

Secure this property
for up to **59% less!**

Price

£129,950

Leasehold

2x  1x  1x 

**Eastwood Lodge,
Eastwood Road,
Bramley, Guildford,
Surrey, GU5**

cubitt&west
Helping you move forwards



Main features

- A desirable first floor retirement flat
- Set in the heart of Bramley Village
- Attractive communal gardens and off road parking
- Easy access to shops and amenities
- No onward chain

Accommodation

FIRST FLOOR

Entrance Hall

Bedroom 1: 12'0 x 8'6 (3.66m x 2.59m)

Bedroom 2: 12'8 x 5'8 (3.86m x 1.73m)

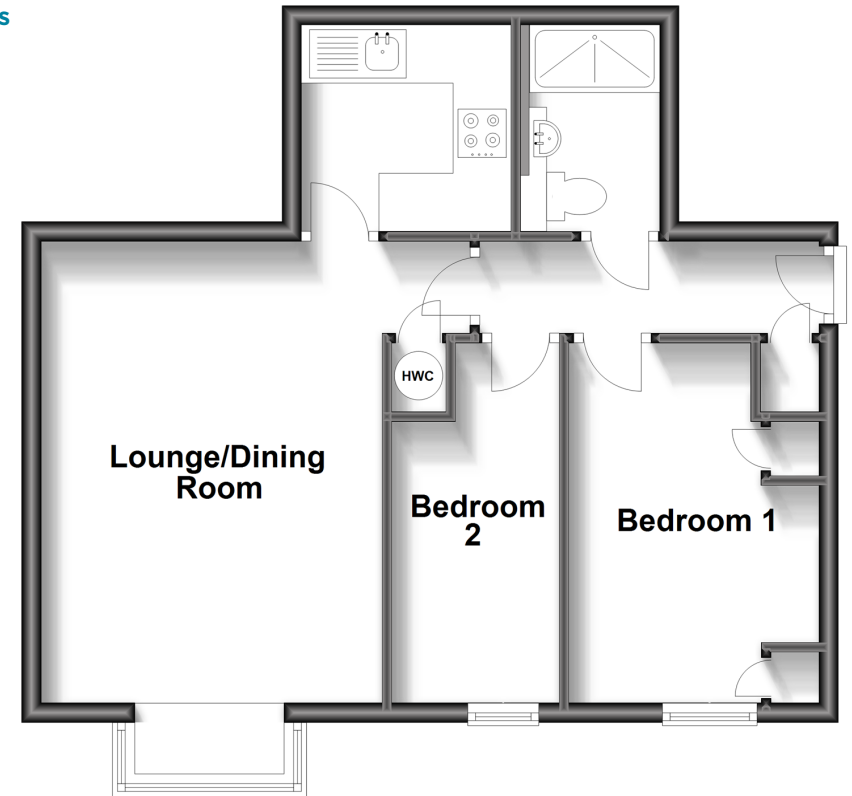
Shower Room

Kitchen: 7'2 x 7'0 (2.19m x 2.14m)

Lounge/Dining Room: 15'7 x 11'7 (4.75m x 3.53m)

First Floor

Approx. 47.3 sq. metres (508.9 sq. feet)



Call Cranleigh - 01483 271567 ■ cubittandwest.co.uk

- Legal advice should be taken to verify fixtures/fittings, planning, alterations and/or lease details
- Appliances & services are untested, dimensions are approximate and floor plans are not to scale
- Through a Homewise Home For Life Plan people aged 60+ can secure this property for up to 59% less, by purchasing a Lifetime Lease.



20306453/20240214/KAB/KAB