



Price
£700,000

Freehold

3x  1x  1x 

**Mead Road, Cranleigh,
Surrey, GU6**

OVER 60?

Secure this property
for up to **59% less!**

cubitt&west
Helping you move forwards

Accommodation

GROUND FLOOR

Entrance Hallway

Lounge : 14'2 into bay x 11'3 (4.32m x 3.43m)

Playroom: 11'1 x 10'6 (3.38m x 3.20m)

Kitchen/Diner: 16'5 x 10'8 (5.01m x 3.25m)

Cloakroom

FIRST FLOOR

Landing

Bedroom 1: 12'1 x 11'1 (3.69m x 3.38m)

Bedroom 2: 11'3 x 11'2 (3.43m x 3.41m)

Bedroom 3: 8'11 x 7'1 (2.72m x 2.16m)

SECOND FLOOR

Landing

Loft Room 1: 11'2 x 8'4 (3.41m x 2.54m)

Loft Room 2: 10'5 x 8'9 (3.18m x 2.67m)

Family Bathroom

OUTSIDE

Cabin: 38'0 x 18'0 (11.59m x 5.49m)

Cabin Kitchen: 10'4 x 9'11 (3.15m x 3.02m)

Cabin Storage Room: 9'11 x 7'11 (3.02m x 2.41m)

Front Garden

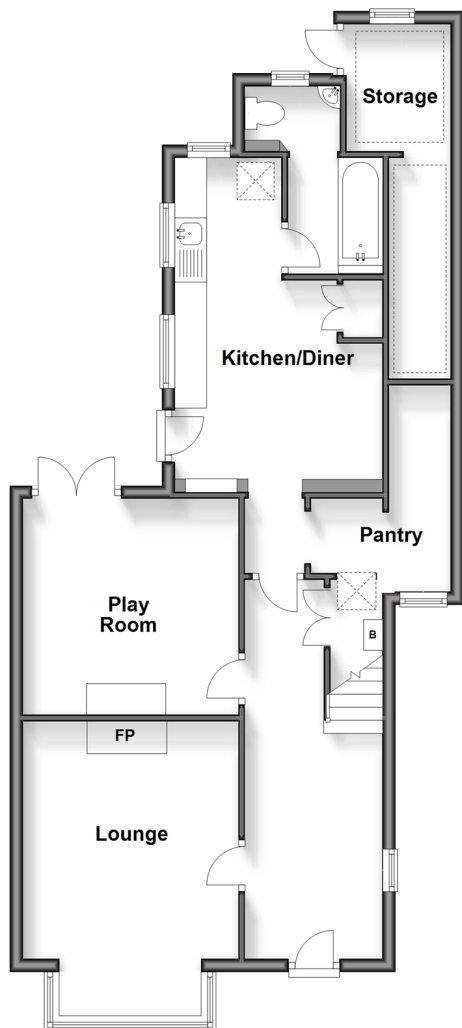
Rear Garden

Shared Driveway

Off Road Parking

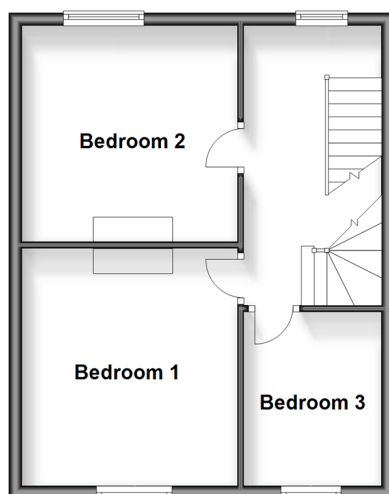
Ground Floor

Approx. 70.9 sq. metres (763.5 sq. feet)



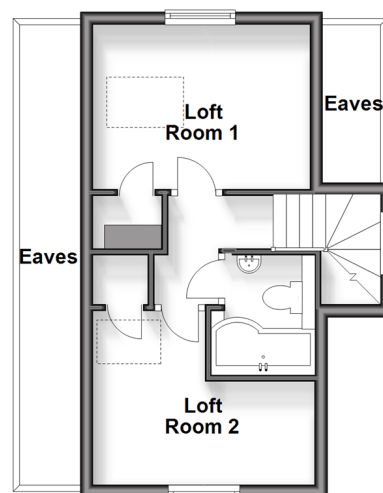
First Floor

Approx. 40.5 sq. metres (436.0 sq. feet)



Second Floor

Approx. 26.1 sq. metres (280.6 sq. feet)





Main features

- A wonderful period home within walking distance of the village centre and local schools
- Potential to be extended - subject to planning permission
- Third floor has two spacious rooms currently being used as bedrooms
- Huge home office with a shower room and kitchen
- Close to great countryside walks



Nearest Schools

Primary Schools: St Cuthbert Mayne Catholic 0.4 miles, Cranleigh C of E 0.8 miles, Park Mead 1. miles

Secondary Schools: Glebelands School 0.8 miles, Cranleigh School 1.4 miles (private)



Transport Information

Train Stations: Bramley & Wonersh 6.2 miles, Ockley 8.7 miles, Milford 8.9 miles



Address

Mead Road, Cranleigh, Surrey, GU6



Directions

For directions to this property please contact us.



cubitt&west
Helping you move forwards

Call Cranleigh Branch 01483 271567 ■ cubittandwest.co.uk



■ Legal advice should be taken to verify fixtures/fittings, planning, alterations and/or lease details ■ Appliances & services are untested, dimensions are approximate and floor plans are not to scale
■ Through a Homewise Home For Life Plan people aged 60+ can secure this property for up to 59% less, by purchasing a Lifetime Lease.



20306487/20240426/CH/KAB