



Price
£780,000

Freehold

4x  1x  1x 

**Ridings Barn, Loxwood
Road, Alfold, Surrey,
GU6**

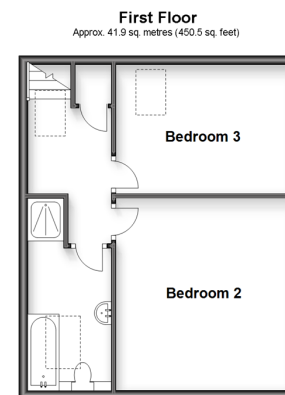
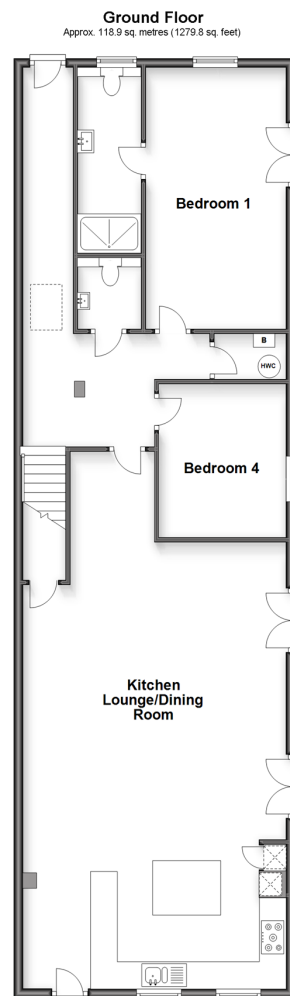
OVER 60?

Secure this property
for up to **59% less!**



Video Tour available

cubitt&west
Helping you move forwards



Accommodation

GROUND FLOOR

Kitchen, Lounge, Dining Room: 32'1 x 19'8
(9.79m x 6.00m)

Bedroom 4: 11'1 x 9'4 (3.38m x 2.85m)

Bedroom 1 with en suite: 18'0 x 10'3 (5.49m
x 3.13m)

FIRST FLOOR

Landing

Bedroom 2: 13'10 x 12'11 (4.22m x 3.94m)

Bedroom 3: 12'11 x 9'3 (3.94m x 2.82m)

OUTSIDE

Front Garden

Rear Garden

Outbuilding/Garage



Main features

- Spacious and light newly converted barn conversion
- Acres of equestrian land available by separate negotiation
- Timber out building for garage with lots of storage
- Driveway with ample off road parking



Nearest Schools

Primary Schools: Loxwood Primary 1.5 miles, Rudgwick Primary 2.9 miles, Plaistow and Kirdford Primary 2.9 miles

Secondary Schools: Glebelands School 3.4 miles, Cranleigh School (private) 3.7 miles



Transport Information

Train Stations: Witley 6.1 miles, Milford 7.0 miles, Godalming 7.6 miles



Address

Ridings Barn, Loxwood Road, Alfold, Surrey, GU6



Directions

For directions to this property please contact us.



cubitt&west
Helping you move forwards

Call Cranleigh Branch 01483 271567 ■ cubittandwest.co.uk



- Legal advice should be taken to verify fixtures/fittings, planning, alterations and/or lease details
- Appliances & services are untested, dimensions are approximate and floor plans are not to scale
- Through a Homewise Home For Life Plan people aged 60+ can secure this property for up to 59% less, by purchasing a Lifetime Lease.



20306501/20230605/RD/KAB