



**Price**

**£530,000**

**Freehold**

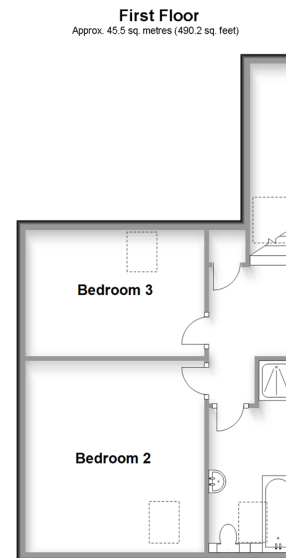
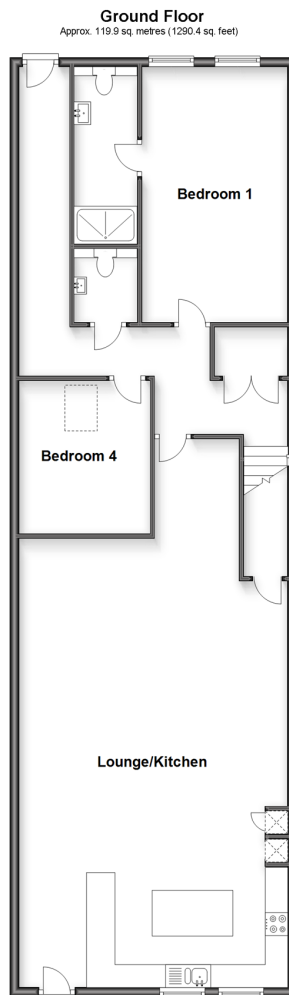
4x  2x  1x 

**Ridings Barn, Loxwood  
Road, Alfold, Surrey,  
GU6**

**OVER 60?**

Secure this property  
for up to **59% less!**

**cubitt&west**  
Helping you move forwards



## Accommodation

### GROUND FLOOR

**Kitchen/Dining/Living Room:** 32'1 (9.79m) narrowing to 19'6 (5.95m) x 0'0 (0.00m)

**Bedroom 1 :** 18'0 (5.49m) narrowing to 10'4 (3.15m) x 0'0 (0.00m)

**En Suite Shower room**

**Bedroom 4 :** 11'1 (3.38m) narrowing to 9'4 (2.85m) x 0'0 (0.00m)

**Cloakroom**

### FIRST FLOOR

**Landing**

**Bedroom 2:** 13'9 (4.19m) narrowing to 12'11 (3.94m) x 0'0 (0.00m)

**Bedroom 3:** 13'0 (3.97m) narrowing to 9'4 (2.85m) x 0'0 (0.00m)

**Bathroom**

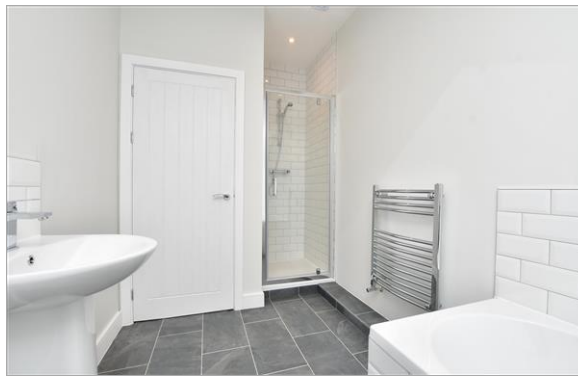
### OUTSIDE

**Front Garden**

**Rear Garden**

**Parking for two cars**





## Main features

- Newly covered barn with Vaulted Ceilings
- Surprisingly Spacious Home
- Set in a Semi Rural Village with beautiful Countryside and local amenities nearby
- Parking for two cars



### Nearest Schools

Primary Schools: Loxwood Primary 1.5 miles, Rudgwick Primary 2.9 miles, Plaistow and Kirdford Primary 2.9 miles

Secondary Schools: Rikkyo School-in-England 1.3 miles, Glebelands School 3.4 miles, Cranleigh School 3.7 miles



### Transport Information

Train Stations: Witley 6.1 miles, Milford 7.0 miles, Godalming 7.6 miles



### Address

Ridings Barn, Loxwood Road, Alfold, Surrey, GU6



### Directions

For directions to this property please contact us.



**cubitt&west**  
Helping you move forwards

Call Cranleigh Branch 01483 271567 ■ [cubittandwest.co.uk](https://cubittandwest.co.uk)



■ Legal advice should be taken to verify fixtures/fittings, planning, alterations and/or lease details ■ Appliances & services are untested, dimensions are approximate and floor plans are not to scale  
■ Through a Homewise Home For Life Plan people aged 60+ can secure this property for up to 59% less, by purchasing a Lifetime Lease.



20306519/20230413/CH/KAB