



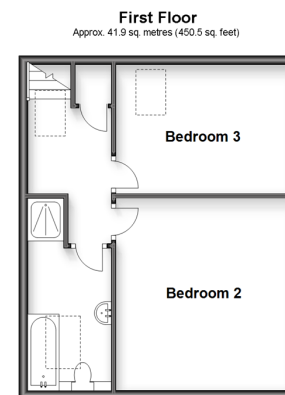
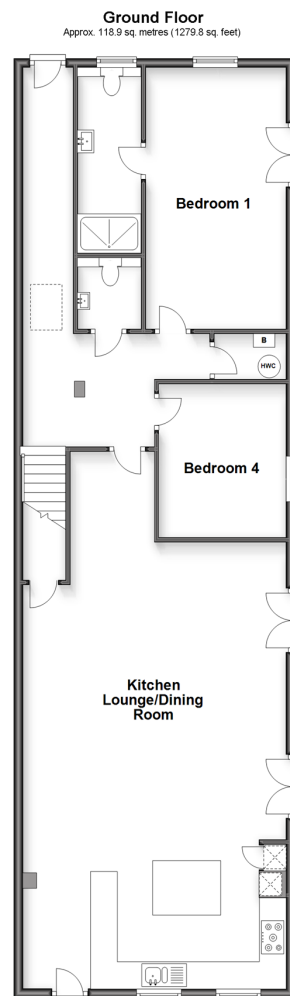
**Price**  
**£730,000**

**Freehold**

3x  1x  1x 

**Ridings Barn, Loxwood  
Road, Alfold, Surrey,  
GU6**

**cubitt&west**  
Helping you move forwards



## Accommodation

### GROUND FLOOR

Kitchen, Lounge, Dining Room: 32'1 x 19'8  
(9.79m x 6.00m)

Bedroom 4: 11'1 x 9'4 (3.38m x 2.85m)

Bedroom 1 with en suite: 18'0 x 10'3 (5.49m  
x 3.13m)

### FIRST FLOOR

Landing

Bedroom 2: 13'10 x 12'11 (4.22m x 3.94m)

Bedroom 3: 12'11 x 9'3 (3.94m x 2.82m)

### OUTSIDE

Front Garden

Rear Garden

Outbuilding/Garage



## Main features

- **Spacious and light newly converted barn conversion**
- **Acres of equestrian land available by separate negotiation**
- **Timber out building for garage with lots of storage**
- **Driveway with ample off road parking**



### Nearest Schools

Primary Schools: Loxwood Primary 1.5 miles, Rudgwick Primary 2.9 miles, Plaistow and Kirdford Primary 2.9 miles

Secondary Schools: Glebelands School 3.4 miles, Cranleigh School (private) 3.7 miles.



### Transport Information

Train Stations: Witley 6.1 miles, Milford 7.0 miles, Godalming 7.6 miles



### Address

Ridings Barn, Loxwood Road, Alfold, Surrey, GU6



### Directions

For directions to this property please contact us.





**cubitt&west**  
Helping you move forwards

Call Cranleigh Branch 01483 271567 ■ [cubittandwest.co.uk](https://cubittandwest.co.uk)



■ Legal advice should be taken to verify fixtures/fittings, planning, alterations and/or lease details ■ Appliances & services are untested, dimensions are approximate and floor plans are not to scale



20306557/20231213/SG/KAB