



Guide Price
£575,000

Freehold

3x  2x  1x 

**Barley Mews, Rudgwick,
Horsham, West Sussex,
RH12**

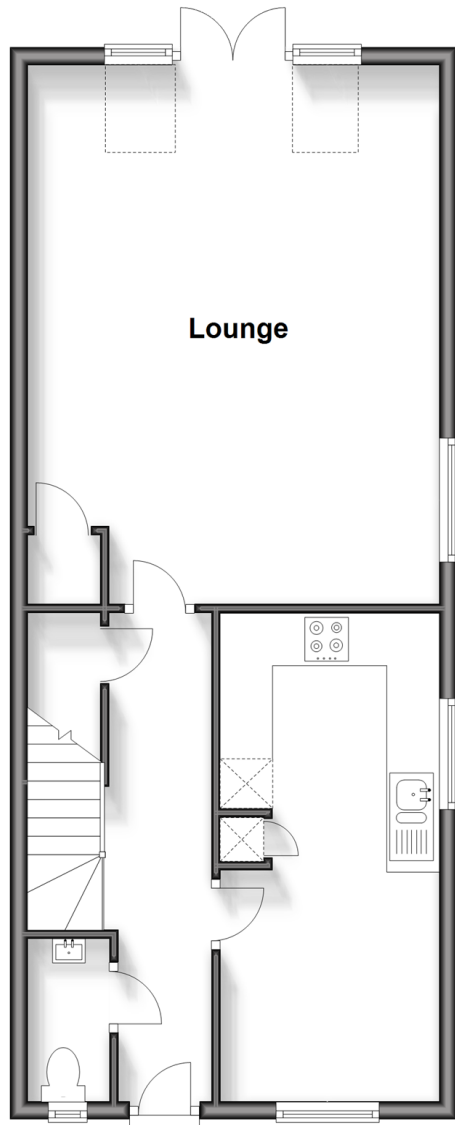
OVER 60?

Secure this property
for up to **59% less!**

cubitt&west
Helping you move forwards

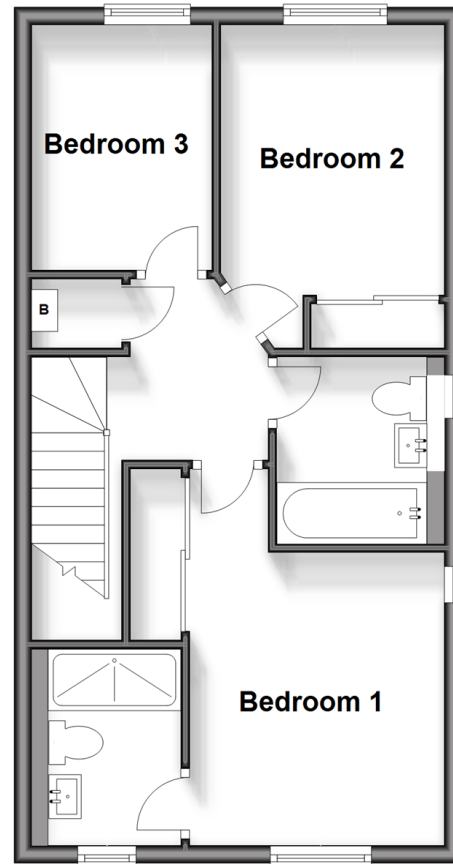
Ground Floor

Approx. 55.9 sq. metres (601.4 sq. feet)



First Floor

Approx. 44.2 sq. metres (476.2 sq. feet)



Accommodation

GROUND FLOOR

Entrance Hallway

Kitchen/Dining Room: 18'4 x 8'3 (5.59m x 2.52m)

Lounge: 20'1 x 15'7 (6.13m x 4.75m)

Cloakroom

FIRST FLOOR

Landing

Bedroom 1: 14'1 x 9'7 (4.30m x 2.92m)

En Suite

Bedroom 2: 12'1 x 8'6 (3.69m x 2.59m)

Bedroom 3: 9'2 x 6'9 (2.80m x 2.06m)

Bathroom

OUTSIDE

Allocated Parking

Rear Garden



Main features

- A modern end of terrace house situated on a corner plot
- Large lounge diner with views of the private rear garden
- A good sized garden that wraps around two sides of the property
- Located at the end of a cul-de-sac in the popular village of Rudgwick
- No onward chain



Nearest Schools

Primary: Penthorpe Prep (private) 0.9 mi, Rudgwick Primary 1.0 mi, Slinfold CofE 4.7 mi, Loxwood 4.9 mi

Secondary: Penthorpe (private) 0.9 mi, Farlington (private) 4.5 mi, Glebelands 5.6 mi, The Weald 6.6 mi.



Transport Information

Train Stations: Billingshurst 6.6 miles, Ockley 7.5 miles, Warnham 8.2 miles, Horsham 8.5 miles.



Address

Barley Mews, Rudgwick, Horsham, West Sussex, RH12



Directions

For directions to this property please contact us.



cubitt&west
Helping you move forwards

Call Cranleigh Branch 01483 271567 ■ cubittandwest.co.uk



■ Legal advice should be taken to verify fixtures/fittings, planning, alterations and/or lease details ■ Appliances & services are untested, dimensions are approximate and floor plans are not to scale
■ Through a Homewise Home For Life Plan people aged 60+ can secure this property for up to 59% less, by purchasing a Lifetime Lease.



20306564/20231106/CH/RD