



Price

£600,000

Freehold

4x  2x  1x 

**Loxwood Road, Alfold,
Surrey, GU6**

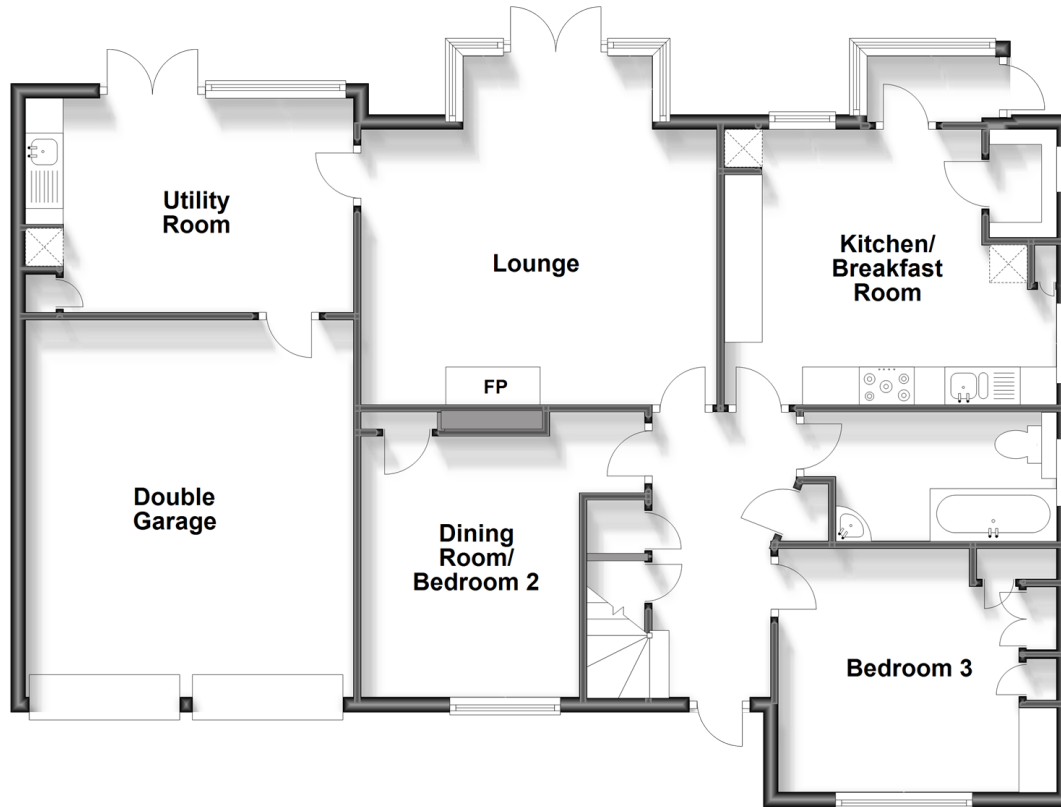
OVER 60?

Secure this property
for up to **59% less!**

cubitt&west
Helping you move forwards

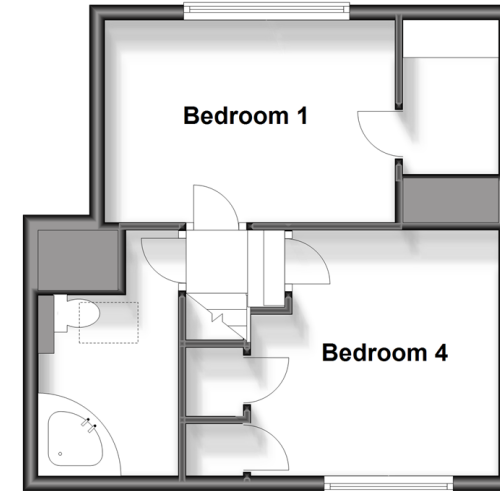
Ground Floor

Approx. 113.6 sq. metres (1222.4 sq. feet)



First Floor

Approx. 34.5 sq. metres (371.3 sq. feet)



Accommodation

GROUND FLOOR

Entrance Hallway
 Dining Room / Bedroom 2: 11'5 x 9'5 (3.48m x 2.87m)
 Bedroom 3: 12'10 x 10'6 (3.91m x 3.20m)
 Lounge: 15'7 x 12'2 (4.75m x 3.71m)
 Kitchen/Breakfast Room: 14'8 x 12'1 (4.47m x 3.69m)
 Utility Room: 14'5 x 9'5 (4.40m x 2.87m)
 Cloakroom

FIRST FLOOR

Landing
 Bedroom 1: 11'0 x 10'9 (3.36m x 3.28m)
 Bedroom 4: 12'8 x 8'8 (3.86m x 2.64m)
 Bathroom

OUTSIDE

Front Garden
 Rear Garden
 Garage: 17'6 x 14'6 (5.34m x 4.42m)
 Driveway



Main features

- A detached chalet bungalow with driveway parking and double garage
- Spacious lounge overlooking the large manicured rear garden
- Separate kitchen and dining room plus a large utility room
- Surrounded by beautiful countryside yet only a short drive from local shops and facilities



Nearest Schools

Primary Schools: Loxwood 1.9 miles, Cranleigh C of E 3.0 miles, St Cuthbert Mayne Catholic 3.1 miles

Secondary Schools: Glebelands School 3.0 miles, Cranleigh School 3.4 miles (private)



Transport Information

Train Stations: Witley 5.8 miles, Milford 6.6 miles, Godalming 7.2 miles



Address

Loxwood Road, Alfold, Surrey, GU6



Directions

For directions to this property please contact us.



cubitt&west
Helping you move forwards

Call Cranleigh Branch 01483 271567 ■ cubittandwest.co.uk



■ If buying to let, the energy rating will need to be improved to at least 'E' rating before you can let the property
■ Appliances & services are untested, dimensions are approximate and floor plans are not to scale

■ Legal advice should be taken to verify fixtures/fittings, planning, alterations and/or lease details
■ Through a Homewise Home For Life Plan people aged 60+ can secure this property for up to 59% less, by purchasing a Lifetime Lease.

20306567/20230916/CH/KAB