



Guide Price
£245,000

Leasehold

3x  1x  1x 

**Hailey Place, Cranleigh,
Surrey, GU6**

OVER 60?

Secure this property
for up to **59% less!**

cubitt&west
Helping you move forwards



Main features

- Rarely available three bedroom maisonette
- Kitchen/breakfast room plus a re-fitted bathroom
- Garage en-bloc
- Overlooking large communal grounds

Accommodation

FIRST FLOOR

Kitchen : 13'2 x 11'1 (4.02m x 3.38m)

Lounge : 17'0 x 11'2 (5.19m x 3.41m)

Bedroom 1: 12'8 x 11'2 (3.86m x 3.41m)

Bedroom 2: 11'8 x 11'2 (3.56m x 3.41m)

Bedroom 3: 11'2 x 8'0 (3.41m x 2.44m)

Bathroom: 8'2 x 4'9 (2.49m x 1.45m)

OUTSIDE

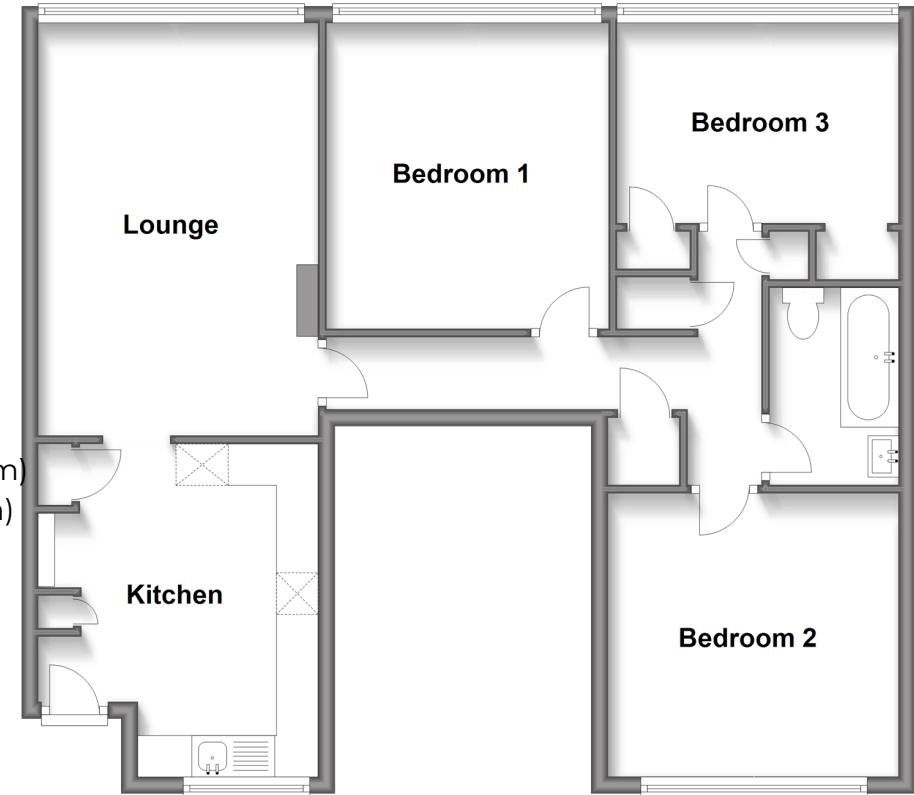
Garage En-bloc
Communal Grounds

Call Cranleigh - 01483 271567 ■ cubittandwest.co.uk

- Legal advice should be taken to verify fixtures/fittings, planning, alterations and/or lease details
- Appliances & services are untested, dimensions are approximate and floor plans are not to scale
- Through a Homewise Home For Life Plan people aged 60+ can secure this property for up to 59% less, by purchasing a Lifetime Lease.

First Floor

Approx. 77.1 sq. metres (829.6 sq. feet)



20306648/20240420/CH/KAB