



Price

£500,000

Freehold

4x  2x  4x 

**Knighton Close, Pound
Hill, Crawley, West
Sussex, RH10**

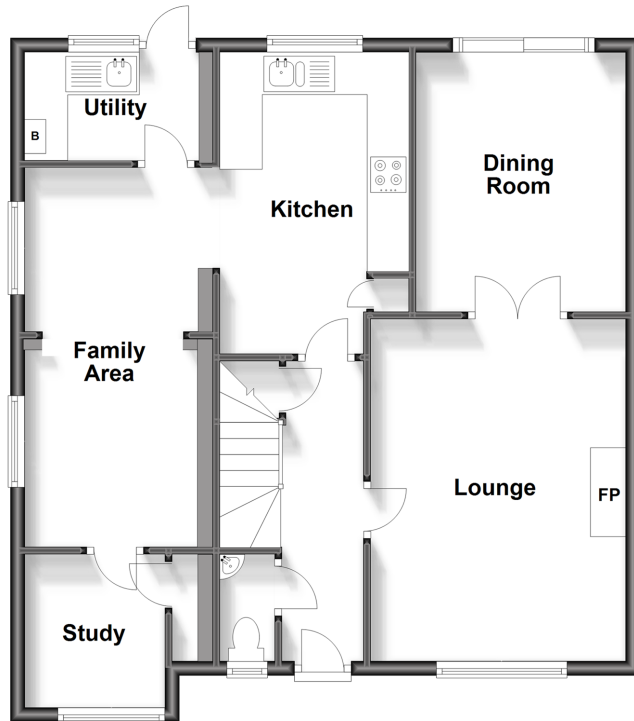
OVER 60?

Secure this property
for up to **59% less!**

cubitt&west
Helping you move forwards

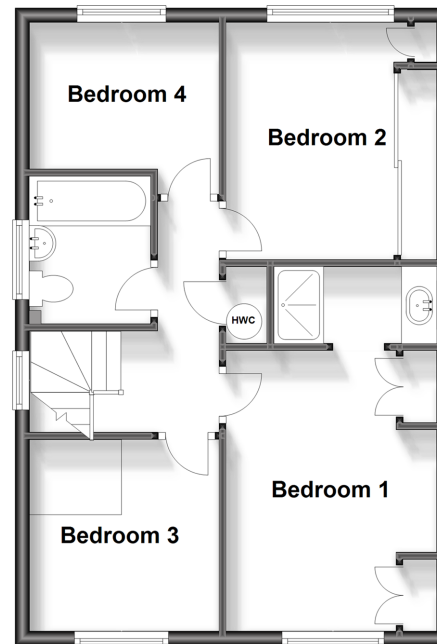
Split Level Ground Floor

Approx. 74.0 sq. metres (796.8 sq. feet)



First Floor

Approx. 49.3 sq. metres (530.8 sq. feet)



Accommodation

GROUND FLOOR

Entrance Hall

Downstairs Cloakroom

Lounge: 15'9 x 11'11 (4.80m x 3.63m)

Dining Room: 12'0 x 9'9 (3.66m x 2.97m)

Kitchen: 13'10 x 8'8 (4.22m x 2.64m)

Family Area: 17'11 x 8'0 (5.46m x 2.44m)

Study: 7'1 x 6'6 (2.16m x 1.98m)

Utility : 8'0 x 5'0 (2.44m x 1.53m)

FIRST FLOOR

Landing

Bedroom 1: 13'1 x 9'11 (3.99m x 3.02m)

En Suite Shower Room: 7'8 x 3'8 (2.34m x 1.12m)

Bedroom 2: 10'11 x 9'11 (3.33m x 3.02m)

Bedroom 3: 9'0 x 8'11 (2.75m x 2.72m)

Bedroom 4: 8'8 x 6'9 (2.64m x 2.06m)

Bathroom: 6'10 x 5'6 (2.08m x 1.68m)

OUTSIDE

Front Garden

Rear Garden

Double Garage: 22'10 x 16'3 (6.96m x 4.96m)



Main features

- Detached corner plot with room to extend site
- Double garage and driveway
- Utility room
- Potential to modernise and add improvements to a much loved family home
- Near local shops, schools and transports links



Nearest Schools

Primary Schools: Milton Mount Primary 0.5 miles, Pound Hill Junior School, Crawley 0.9 miles, Copthorne CofE Junior School 1.3 miles

Secondary Schools: Hazelwick School 0.9 miles, Oriel High



Transport Information

Train Stations: Three Bridges 1.1 miles, Gatwick Airport 1.7 miles, Crawley 2.2 miles



Address

Knighton Close, Pound Hill, Crawley, West Sussex, RH10



Directions

For directions to this property please contact us.



cubitt&west
Helping you move forwards

Call Crawley Branch 01293 522233 ■ cubittandwest.co.uk



- Legal advice should be taken to verify fixtures/fittings, planning, alterations and/or lease details
- Appliances & services are untested, dimensions are approximate and floor plans are not to scale
- Through a Homewise Home For Life Plan people aged 60+ can secure this property for up to 59% less, by purchasing a Lifetime Lease.



20400807/20230902/SS/SI