



OVER 60?

You could get up to
59% off the price!*



Video Tour available

Price

£550,000

Freehold

4x  3x  3x 

**North Road, Three
Bridges, Crawley, West
Sussex, RH10**

cubitt&west
Helping you move forwards



Main features

- End of terrace Neo Georgian town house
- Driveway for two cars and double garage
- Walking distance to shops and Three Bridges train station
- En-suite to bedroom 1
- Local to schools

Accommodation

GROUND FLOOR

Hallway

Family Room: 15'7 x 12'0 (4.75m x 3.66m)

Dining Room: 15'1 x 11'10 (4.60m x 3.61m)

Kitchen: 11'10 x 8'5 (3.61m x 2.57m)

Downstairs Cloakroom: 5'9 x 5'9 (1.75m x 1.75m)

Utility Room: 6'8 x 5'10 (2.03m x 1.78m)

FIRST FLOOR

Landing

Lounge: 20'2 x 12'2 (6.15m x 3.71m)

Bedroom 1: 20'2 x 11'5 (6.15m x 3.48m)

En-Suite Shower Room: 6'11 x 6'4 (2.11m x 1.93m)

SECOND FLOOR

Landing

Bedroom 2: 17'10 x 11'1 (5.44m x 3.38m)

Family Bathroom: 9'8 x 6'11 (2.95m x 2.11m)

Bedroom 3: 11'11 x 9'8 (3.63m x 2.95m)

Bedroom 4: 11'11 x 9'9 (3.63m x 2.97m)

OUTSIDE

Front Garden

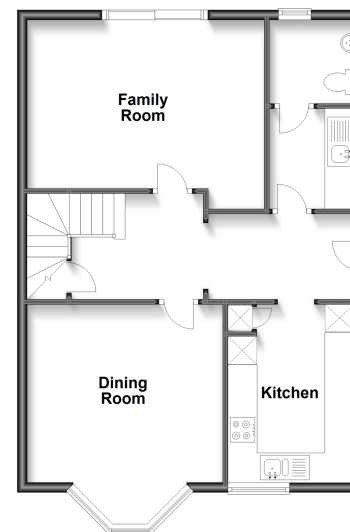
Rear Garden

Side Garden

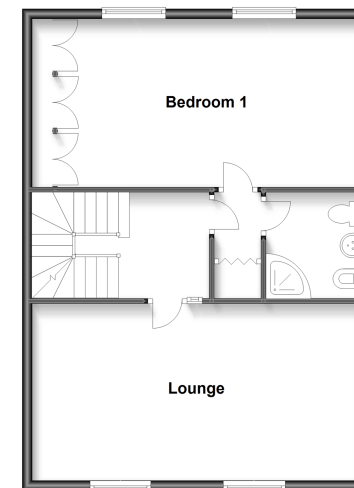
Driveway

Double Garage

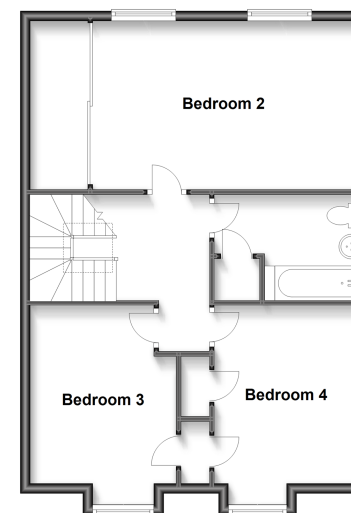
Ground Floor
Approx. 63.1 sq. metres (678.7 sq. feet)



First Floor
Approx. 62.7 sq. metres (674.6 sq. feet)



Second Floor
Approx. 63.7 sq. metres (685.9 sq. feet)



Call Crawley - 01293 522233 ■ cubittandwest.co.uk

- Legal advice should be taken to verify fixtures/fittings, planning, alterations and/or lease details
- Appliances & services are untested, dimensions are approximate and floor plans are not to scale
- Our Homewise partnership offer a 'Home for Life' plan to buyers over 60, granting a lifetime lease for your protection and reducing the purchase price by up to 59%



20405667/20220917/SS/KC