



Price
£500,000

Freehold

4x  2x  1x 

**Langley Walk, Langley
Green, Crawley, West
Sussex, RH11**

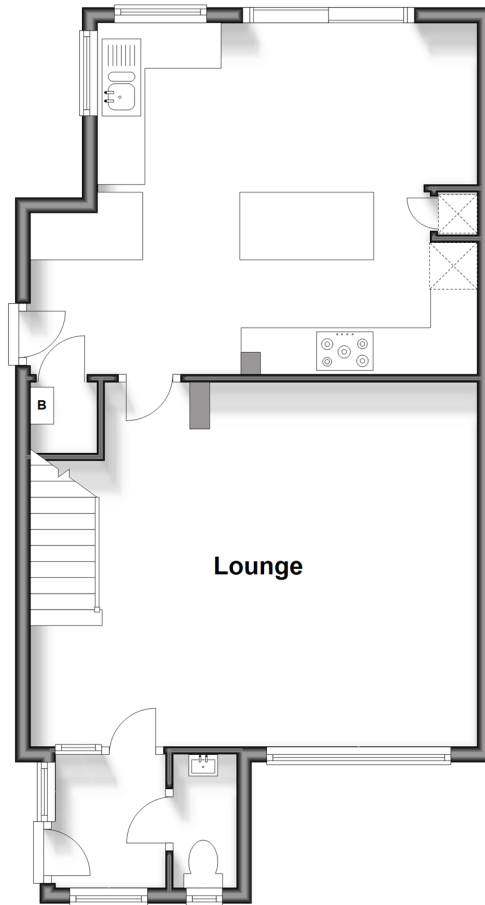
OVER 60?

Secure this property
for up to **59% less!**

cubitt&west
Helping you move forwards

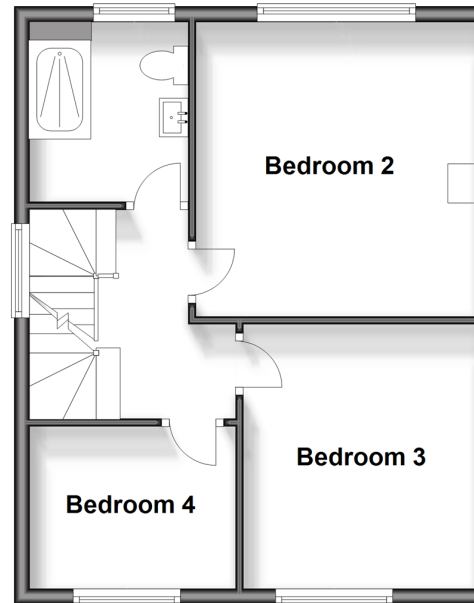
Ground Floor

Approx. 56.2 sq. metres (604.8 sq. feet)



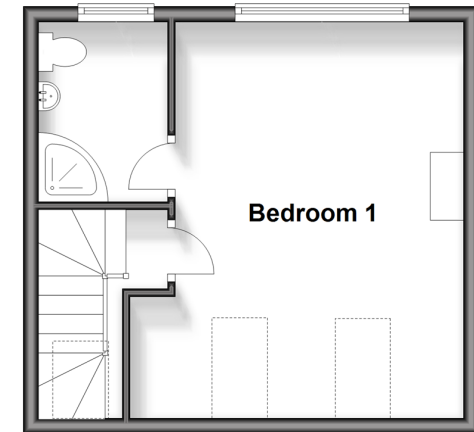
First Floor

Approx. 42.3 sq. metres (455.3 sq. feet)



Second Floor

Approx. 28.2 sq. metres (303.2 sq. feet)



Accommodation

GROUND FLOOR

Entrance Porch

Downstairs Cloakroom

Lounge: 18'11 x 15'6 (5.77m x 4.73m)

Kitchen/Diner : 17'8 (5.39m) narrowing to 15'9 (4.80m) x 15'0 (4.58m)

FIRST FLOOR

Bedroom 2: 12'6 x 11'9 (3.81m x 3.58m)

Bedroom 3: 11'3 x 9'10 (3.43m x 3.00m)

Bedroom 4: 8'9 x 6'9 (2.67m x 2.06m)

Shower Room: 7'9 x 6'8 (2.36m x 2.03m)

SECOND FLOOR

Landing

Bedroom 1: 17'0 (5.19m) x 14'5 (4.40m) narrowing to 12'6 (3.81m)

En Suite Shower Room: 7'10 x 5'9 (2.39m x 1.75m)

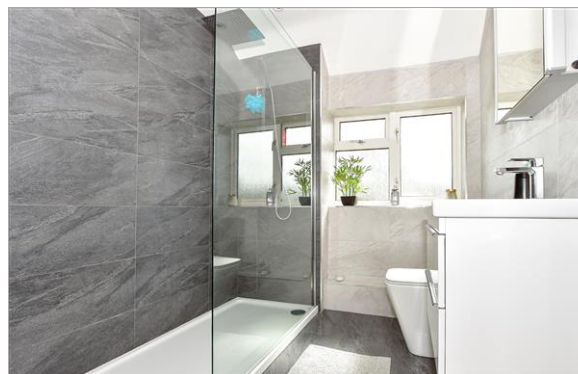
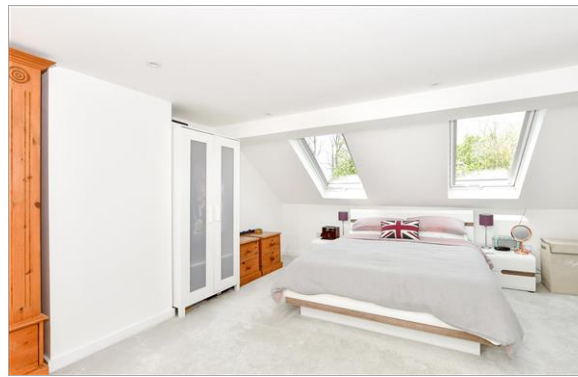
OUTSIDE

Front Garden

Rear Garden

Driveway

Garage



Main features

- Extended and improved semi detached house
- Impressive re-fitted kitchen with integrated appliances and central island
- Bedroom one with en suite shower room, re-fitted family shower room and downstairs cloakroom
- Landscaped rear garden, off road parking and garage at the rear



Nearest Schools

Primary Schools: Our Lady Queen of Heaven Catholic Primary, Crawley 0.3 miles, Langley Green Primary 0.7 miles, Northgate Primary 1.0 miles

Secondary Schools: Ifield Community College 2.5 miles,



Transport Information

Train Stations: Ifield 1.3 miles, Crawley 2.2 miles, Three Bridges 3.0 miles



Address

Langley Walk, Langley Green, Crawley, West Sussex, RH11



Directions

For directions to this property please contact us.



cubitt&west
Helping you move forwards

Call Crawley Branch 01293 522233 ■ cubittandwest.co.uk



■ Legal advice should be taken to verify fixtures/fittings, planning, alterations and/or lease details ■ Appliances & services are untested, dimensions are approximate and floor plans are not to scale
■ Through a Homewise Home For Life Plan people aged 60+ can secure this property for up to 59% less, by purchasing a Lifetime Lease.



20410234/20240504/SS/DC