



Price
£650,000

Freehold

4x  1x  2x 

**Ifield Road, West Green,
Crawley, West Sussex,
RH11**

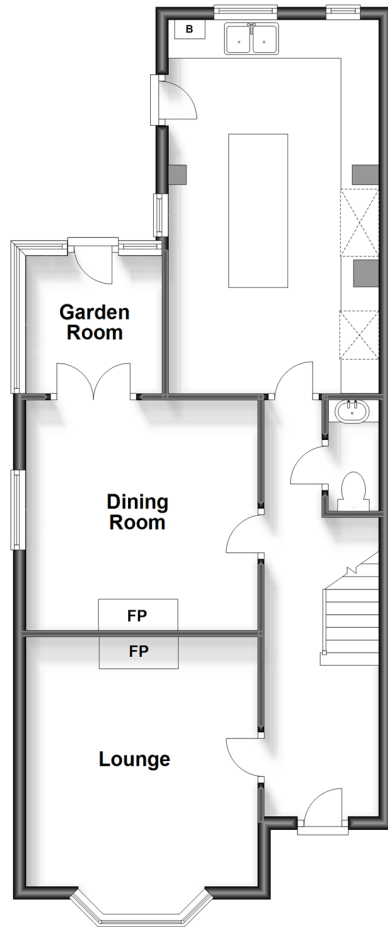
OVER 60?

Secure this property
for up to **59% less!**

cubitt&west
Helping you move forwards

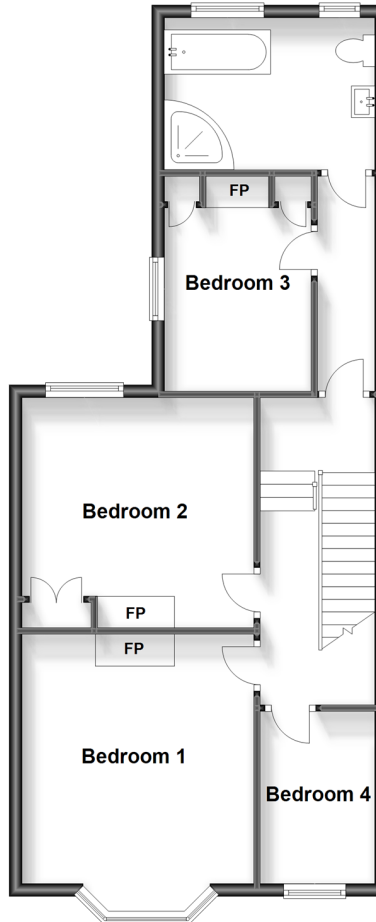
Split Level Ground Floor

Approx. 66.0 sq. metres (710.6 sq. feet)



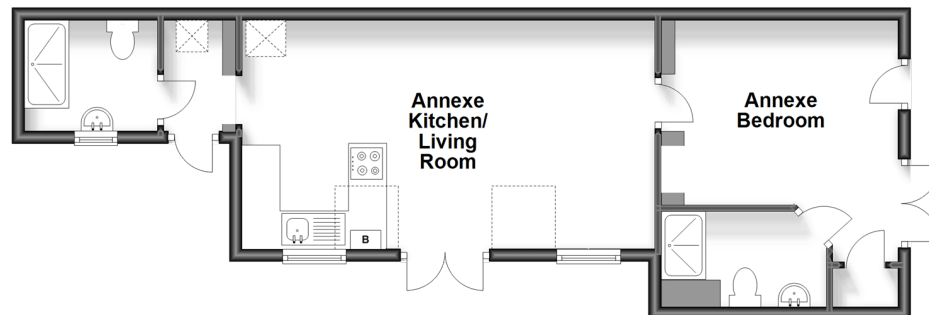
Split Level First Floor

Approx. 63.0 sq. metres (678.1 sq. feet)



Annexe

Approx. 46.9 sq. metres (505.1 sq. feet)



Accommodation

GROUND FLOOR

Entrance Hall

Downstairs Cloakroom

Lounge: 14'5 (4.40m) narrowing to 13'0 (3.97m) x 12'0 (3.66m)

Dining Room: 12'1 x 12'0 (3.69m x 3.66m)

Garden Room: 7'1 x 6'11 (2.16m x 2.11m)

Kitchen/Breakfast Room: 19'6 x 10'9 (5.95m x 3.28m)

FIRST FLOOR

Landing

Bedroom 1: 14'8 (4.47m) narrowing to 13'0 (3.97m) x 12'3 (3.74m)

Bedroom 2: 12'0 (3.66m) x 12'0 (3.66m) narrowing to 10'10 (3.30m)

Bedroom 3: 9'2 x 7'6 (2.80m x 2.29m)

Bedroom 4: 9'0 x 5'11 (2.75m x 1.80m)

Bathroom: 10'9 x 7'11 (3.28m x 2.41m)

ANNEXE

Annexe Kitchen/Living Room: 21'7 x 11'10 (6.58m x 3.61m)

Bedroom : 11'9 x 9'6 (3.58m x 2.90m)

En Suite Shower Room: 8'7 x 5'1 (2.62m x 1.55m)

Inner Hallway

Shower Room: 6'11 x 5'11 (2.11m x 1.80m)

OUTSIDE

Front Garden

Rear Garden

Driveway



Main features

- Semi detached home with detached one bedroom annexe
- Features including fireplaces and high ceilings
- Short walk to Crawley's Town centre and railway station
- Re-fitted kitchen/breakfast room
- Large secluded rear garden and plenty of parking to the front and side of the house



Nearest Schools

Primary Schools: West Green Primary 0.2 miles, St Margaret's CofE Primary 0.3 miles, Mill Primary, The 0.6 miles

Secondary Schools: Manor Green College 0.3 miles, St

Transport Information

Train Stations: Ifield 0.6 miles, Crawley 0.7 miles, Three Bridges 1.7 miles

Address

Ifield Road, West Green, Crawley, West Sussex, RH11

Directions

For directions to this property please contact us.





cubitt&west
Helping you move forwards

Call Crawley Branch 01293 522233 ■ cubittandwest.co.uk



- Legal advice should be taken to verify fixtures/fittings, planning, alterations and/or lease details
- Appliances & services are untested, dimensions are approximate and floor plans are not to scale
- Through a Homewise Home For Life Plan people aged 60+ can secure this property for up to 59% less, by purchasing a Lifetime Lease.



20410863/20230909/SS/DC