



Price
£525,000

Freehold

4x  2x  2x 

**Byerley Way, Pound Hill,
Crawley, West Sussex,
RH10**

OVER 60?

Secure this property
for up to **59% less!**

cubitt&west
Helping you move forwards

Accommodation

GROUND FLOOR

Entrance Porch

Entrance Hall

Kitchen: 14'0 x 11'0 (4.27m x 3.36m)

Dining Area: 10'0 x 8'0 (3.05m x 2.44m)

Lounge: 15'0 x 11'0 (4.58m x 3.36m)

Utility Room: 7'1 x 5'9 (2.16m x 1.75m)

Cloakroom

FIRST FLOOR

Landing

Bedroom 1: 12'0 x 10'0 (3.66m x 3.05m)

En-suite Shower Room

Bedroom 2: 13'0 x 9'0 (3.97m x 2.75m)

Bedroom 3: 11'0 x 9'0 (3.36m x 2.75m)

Bedroom 4: 8'0 x 6'0 (2.44m x 1.83m)

Family Bathroom

OUTSIDE

Front Garden

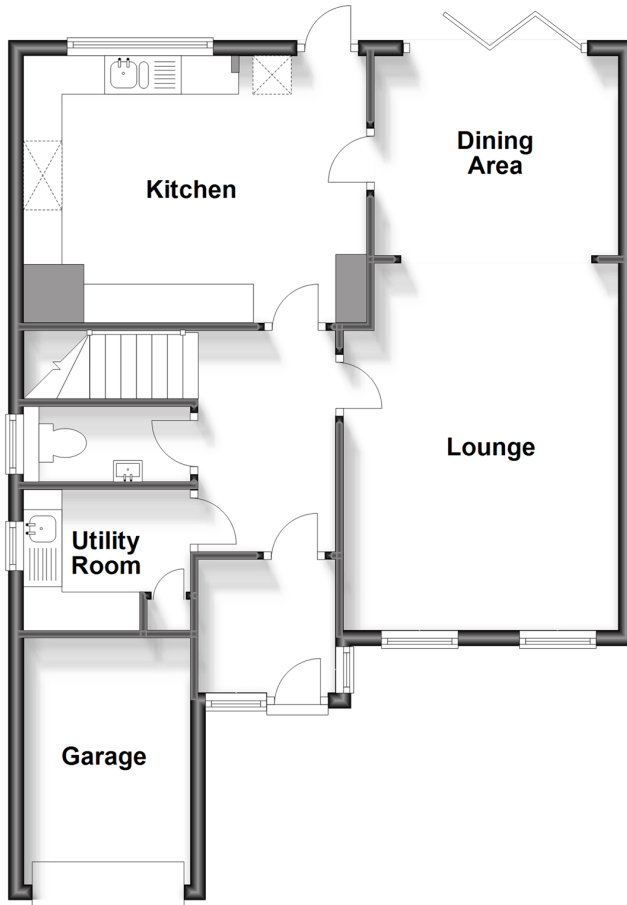
Driveway

Garage

Rear Garden

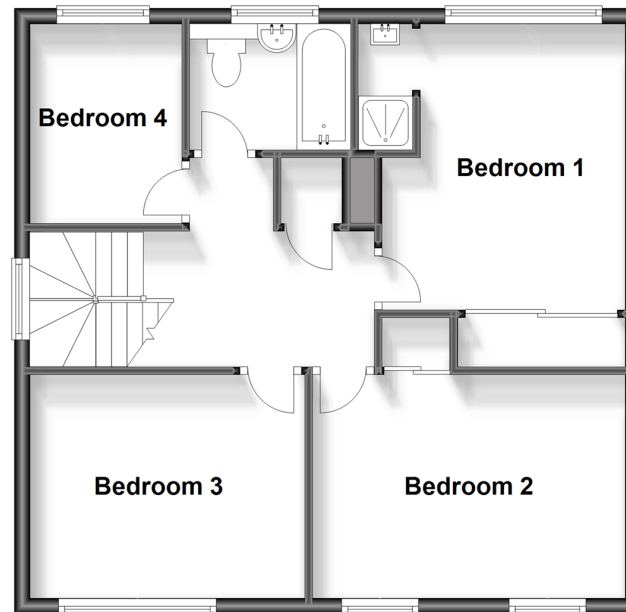
Ground Floor

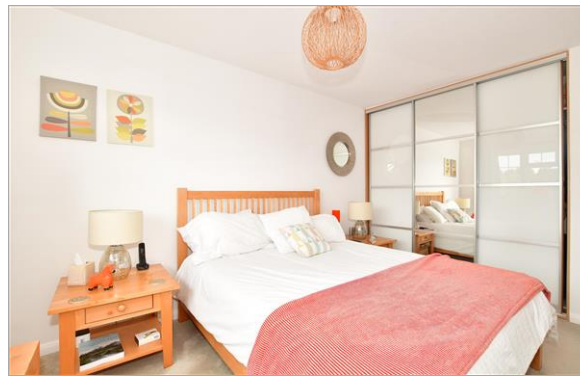
Approx. 66.9 sq. metres (719.7 sq. feet)



First Floor

Approx. 57.9 sq. metres (623.2 sq. feet)





Main features

- Beautifully presented four bedroom detached home
- Utility Room downstairs and en suite
- Sunny garden with SPF awning
- Own driveway with electric garage door
- Owner suited-chain complete above
- Location perfect for local walks, shops, schools and Three Bridges train station



Nearest Schools

Primary Schools: Pound Hill Junior School, Crawley 0.4 miles, Milton Mount Primary 0.6 miles, Maidenbower Junior School 0.9 miles

Secondary Schools: Hazelwick School 1.0 miles, Oriel High



Transport Information

Train Stations: Three Bridges 0.8 miles, Crawley 1.9 miles, Gatwick Airport 2.5 miles



Address

Byerley Way, Pound Hill, Crawley, West Sussex, RH10



Directions

For directions to this property please contact us.



cubitt&west
Helping you move forwards

Call Crawley Branch 01293 522233 ■ cubittandwest.co.uk



- Legal advice should be taken to verify fixtures/fittings, planning, alterations and/or lease details
- Appliances & services are untested, dimensions are approximate and floor plans are not to scale
- Through a Homewise Home For Life Plan people aged 60+ can secure this property for up to 59% less, by purchasing a Lifetime Lease.



20411786/20231109/NH1/NH1