



Price
£350,000

Freehold

3x  1x  1x 

**Shepherd Close,
Southgate, Crawley,
West Sussex, RH10**

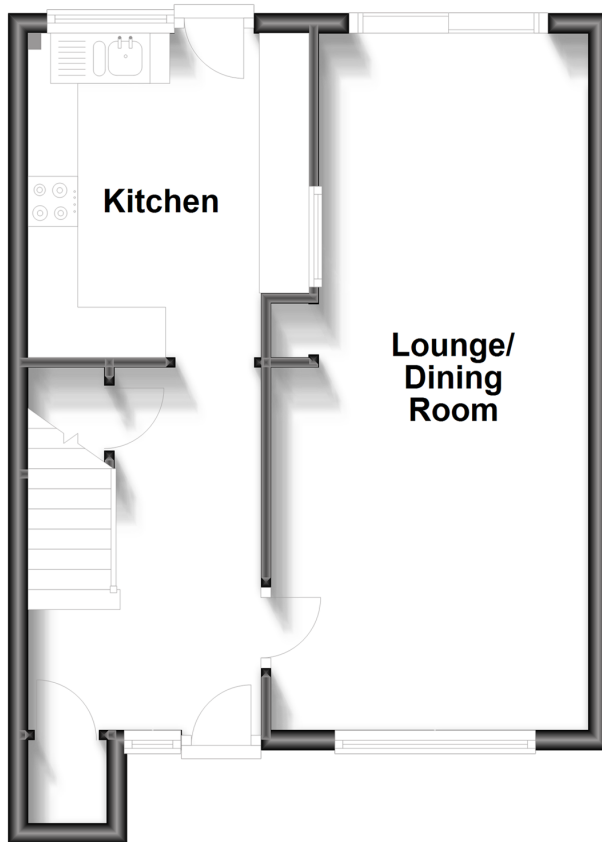
OVER 60?

Secure this property
for up to **59% less!**

cubitt&west
Helping you move forwards

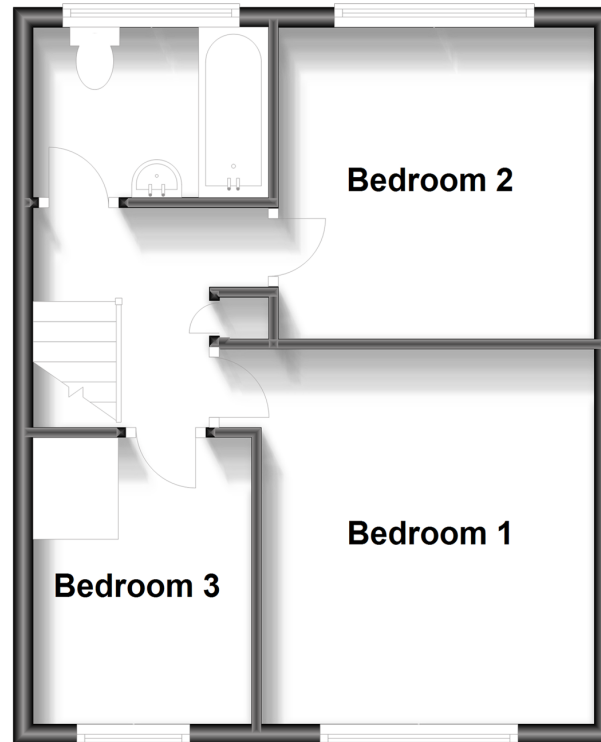
Ground Floor

Approx. 39.8 sq. metres (428.0 sq. feet)



First Floor

Approx. 39.8 sq. metres (428.1 sq. feet)



Accommodation

GROUND FLOOR

Entrance Hall

Lounge/Dining Area: 22'1 (6.74m) x 10'7 (3.23m) narrowing to 9'1 (2.77m)

Kitchen: 9'9 x 9'2 (2.97m x 2.80m)

FIRST FLOOR

Landing

Bedroom 1: 11'7 x 10'9 (3.53m x 3.28m)

Bedroom 2: 10'8 x 10'2 (3.25m x 3.10m)

Bedroom 3: 8'9 x 7'7 (2.67m x 2.31m)

Bathroom

OUTSIDE

Front Garden

Rear Garden



Main features

- Spacious terraced home
- Close to local shops and town centre
- Beautiful rear garden
- Good size kitchen and separate lounge dining area over looking back garden
- Easy access to train station, 24 hour bus links and motorway links



Nearest Schools

Primary Schools: Desmond Anderson Primary 0.1 miles, Oaks Primary, The 0.3 miles, Southgate Primary 0.4 miles
Secondary Schools: Thomas Bennett Community College 0.3 miles, St Wilfrid's Catholic Comprehensive School 1.1 miles, Holy Trinity CofE Secondary School 1.1 miles



Transport Information

Train Stations: Crawley 0.8 miles, Three Bridges 1.5 miles, Ifield 1.7 miles



Address

Shepherd Close, Southgate, Crawley, West Sussex, RH10



Directions

For directions to this property please contact us.



cubitt&west
Helping you move forwards

Call Crawley Branch 01293 522233 ■ cubittandwest.co.uk



■ Legal advice should be taken to verify fixtures/fittings, planning, alterations and/or lease details ■ Appliances & services are untested, dimensions are approximate and floor plans are not to scale
■ Through a Homewise Home For Life Plan people aged 60+ can secure this property for up to 59% less, by purchasing a Lifetime Lease.



20414653/20231026/SS/NH1