



Price
£220,000

Leasehold

2x  1x  1x 

**Hyde Heath Court,
Pound Hill, Crawley,
West Sussex, RH10**

OVER 60?

Secure this property
for up to **59% less!**

cubitt&west
Helping you move forwards



Main features

- Two bedroom split maisonette
- Allocated parking and garage
- Popular Pound Hill community
- Easy access to main train line station, motorway and buses
- Great first time buyer investment

Accommodation

FIRST FLOOR

Kitchen: 15'9 x 6'7 (4.80m x 2.01m)

Lounge/Diner: 14'5 x 10'5 (4.40m x 3.18m)

SECOND FLOOR

Landing

Bedroom 1: 14'8 x 10'2 (4.47m x 3.10m)

Bedroom 2

Bathroom

OUTSIDE

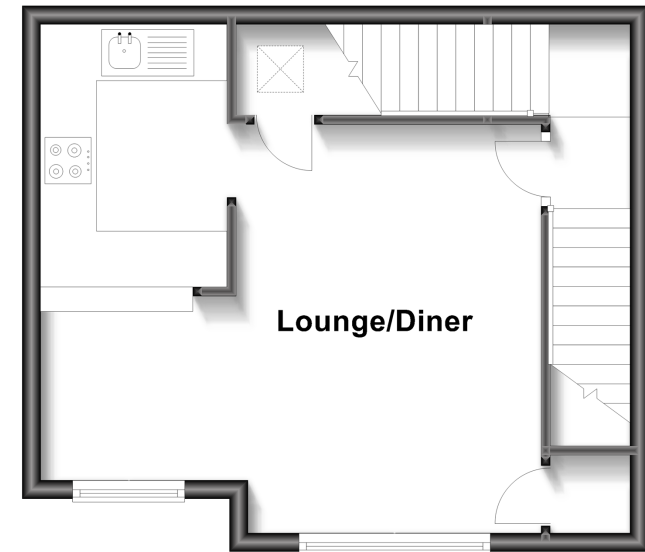
Garage en bloc

Allocated parking space

Communal Gardens

First Floor

Approx. 33.7 sq. metres (363.2 sq. feet)



Second Floor

Approx. 33.8 sq. metres (363.9 sq. feet)



Call Crawley - 01293 522233 ■ cubittandwest.co.uk

- If buying to let, the energy rating will need to be improved to at least 'E' rating before you can let the property
- Legal advice should be taken to verify fixtures/fittings, planning, alterations and/or lease details
- Appliances & services are untested, dimensions are approximate and floor plans are not to scale
- Through a Homewise Home For Life Plan people aged 60+ can secure this property for up to 59% less, by purchasing a Lifetime Lease.



20416744/20230317/SS/NH1