



**Price**  
**£475,000**

**Freehold**

3x  1x  3x 

**Redgrave Drive,  
Maidenbower, Crawley,  
West Sussex, RH10**

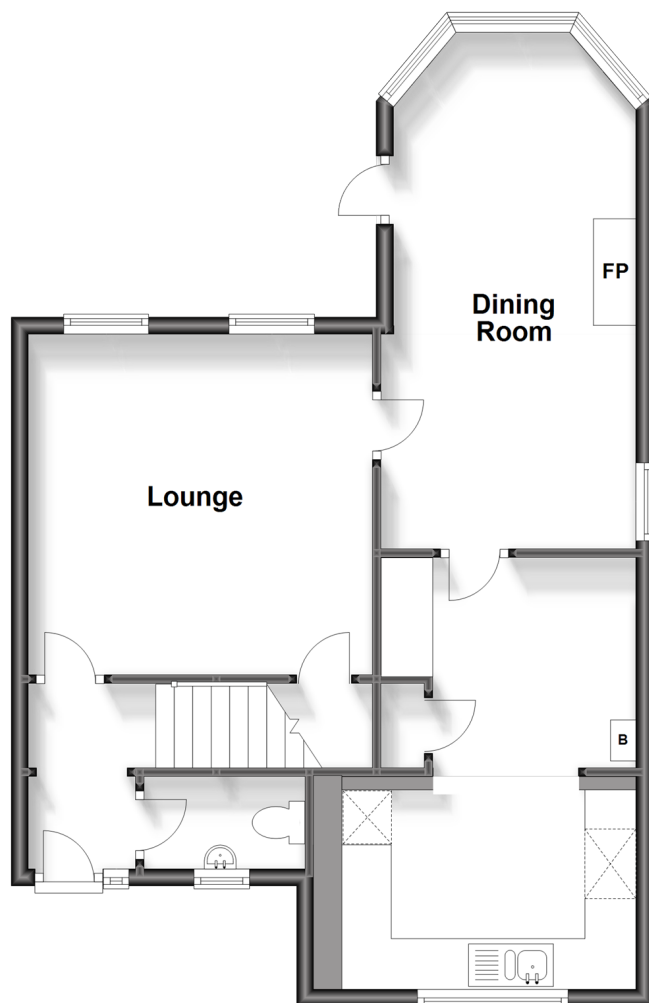
**OVER 60?**

Secure this property  
for up to **59% less!**

**cubitt&west**  
Helping you move forwards

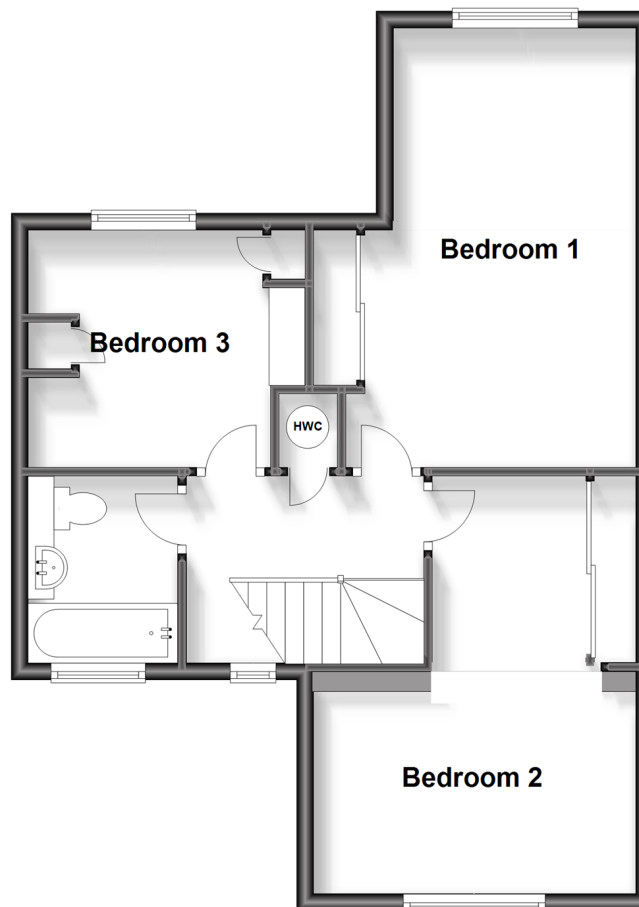
## Ground Floor

Approx. 59.7 sq. metres (643.0 sq. feet)



## First Floor

Approx. 53.4 sq. metres (575.3 sq. feet)



## Accommodation

### GROUND FLOOR

Entrance Hall

Downstairs Cloakroom

Lounge: 13'5 x 13'3 (4.09m x 4.04m)

Dining Room: 20'0 x 9'10 (6.10m x 3.00m)

Kitchen/Breakfast Room: 16'7 (5.06m) x 11'4 (3.46m) narrowing to 9'10 (3.00m)

### FIRST FLOOR

Landing

Bedroom 1: 16'11 (5.16m) x 12'6 (3.81m) narrowing to 9'4 (2.85m)

Bedroom 2: 16'0 (4.88m) x 11'5 (3.48m) narrowing to 7'10 (2.39m)

Bedroom 3: 10'7 (3.23m) narrowing to 9'3 (2.82m) x 9'1 (2.77m)

Bathroom: 7'3 x 5'9 (2.21m x 1.75m)

### OUTSIDE

Front Garden

Side Garden

Rear Garden

Driveway for several cars

Garage





## Main features

- Extended semi detached house with no chain
- Quiet no through road
- Large re-fitted kitchen/breakfast room
- Lounge and separate dining room with fireplace and wood burner
- Gardens to the front, side and rear. Ample parking approaching the garage



## Nearest Schools

Primary Schools: Maidenbower Junior School 0.2 miles, Pound Hill Junior School, Crawley 0.6 miles, St Andrew's CofE Primary 0.9 miles

Secondary Schools: Oriel High School 0.5 miles, Hazelwick

## Transport Information

Train Stations: Three Bridges 0.8 miles, Crawley 1.7 miles, Ifield 3.0 miles

## Address

Redgrave Drive, Maidenbower, Crawley, West Sussex, RH10

## Directions

For directions to this property please contact us.







**cubitt&west**  
Helping you move forwards

Call Crawley Branch 01293 522233 ■ [cubittandwest.co.uk](https://cubittandwest.co.uk)



- Legal advice should be taken to verify fixtures/fittings, planning, alterations and/or lease details
- Appliances & services are untested, dimensions are approximate and floor plans are not to scale
- Through a Homewise Home For Life Plan people aged 60+ can secure this property for up to 59% less, by purchasing a Lifetime Lease.



20417835/20231026/SS/DC