



Price

£220,000

Leasehold

2x  1x  1x 

**Dedisham Close,
Crawley, West Sussex,
RH10**

OVER 60?

Secure this property
for up to **59% less!**

cubitt & west
Helping you move forwards



Main features

- Two double bedroom second floor flat
- Popular Furnace Green location
- Open plan kitchen dining area
- Currently being used as a rental as so close to Three Bridges and Crawley Town Centre
- Close by to popular schools so perfect for starting a family home

Accommodation

SECOND FLOOR

Entrance Hall

Lounge/Diner: 17'0 x 11'0 (5.19m x 3.36m)

Kitchen: 14'1 x 10'0 (4.30m x 3.05m)

Bedroom 1: 12'0 x 8'0 (3.66m x 2.44m)

Bedroom 2: 11'0 x 10'0 (3.36m x 3.05m)

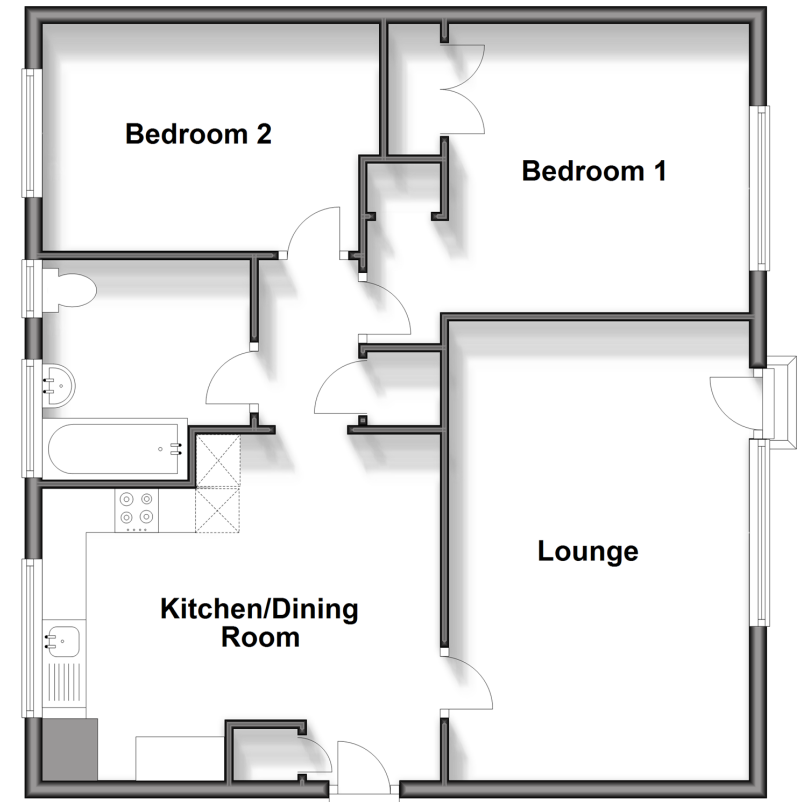
Bathroom

OUTSIDE

Communal Gardens

Second Floor

Approx. 748.8 sq. feet



Call Crawley - 01293 522233 ■ cubittandwest.co.uk

- Legal advice should be taken to verify fixtures/fittings, planning, alterations and/or lease details
- Appliances & services are untested, dimensions are approximate and floor plans are not to scale
- Through a Homewise Home For Life Plan people aged 60+ can secure this property for up to 59% less, by purchasing a Lifetime Lease.



20418223/20231205/NH1/NH1